

Anti-MRPL10 antibody (180-260 C-Term) (STJ94208)

STJ94208

GENERAL INFORMATION

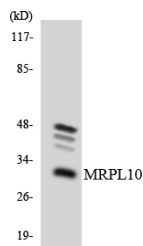
Product Type	Primary antibodies
Short Description	Rabbit polyclonal antibody anti-39s Ribosomal Protein L10-Mitochondrial (180-260 C-Term) is suitable for use in Western Blot, Immunohistochemistry, Immunofluorescence and ELISA research applications.
Applications	WB, IHC-P, IF-P, ELISA
Host/Source	Rabbit
Reactivity	Human, Rat, Mouse

PRODUCT PROPERTIES

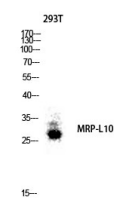
Clonality	Polyclonal
Clone ID	
Concentration	1 mg/mL
Conjugation	Unconjugated
Purification	The antibody was affinity-purified from rabbit anti-serum by affinity-chromatography.
Dilution Range	WB 1:500-1:2000 IHC 1:100-1:300 ELISA 1:20000
Formulation	PBS, 50% Glycerol, 0.5% BSA and 0.02% Sodium Azide.
Isotype	IgG
Storage Instruction	Store at -20°C for up to 1 year from the date of receipt, and avoid repeat freeze-thaw cycles.

TARGET INFORMATION

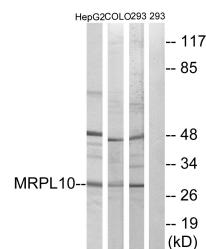
Gene ID	124995
Gene Symbol	MRPL10
Uniprot ID	RM10_HUMAN
Immunogen	The antiserum was produced against synthesized peptide derived from human MRPL10 at amino acid range 211-260
Immunogen Region	180-260 C-Term
Specificity	MRPL10 polyclonal antibody (39s Ribosomal Protein L10-Mitochondrial) binds to endogenous 39s Ribosomal Protein L10-Mitochondrial at the amino acid region 180-260 C-Term.
Immunogen Sequence	



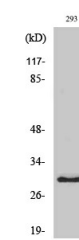
Western blot analysis of the lysates from HT-29 cells using MRPL10 antibody.



Western blot analysis of 293T lysis using MRPL10 antibody. Antibody was diluted at 1:1000



Western blot analysis of lysates from 293, HepG2, and COLO cells, using MRPL10 Antibody. The lane on the right is blocked with the synthesized peptide.



Western blot analysis of various cells using MRPL10 Polyclonal Antibody diluted at 1: 1000

This product is suitable for in-vitro studies under the RESEARCH USE ONLY [RUO] licence. This product must not be used as for diagnostic or other medical purposes.
St John's Laboratory Ltd, Knowledge Dock Business Centre, University Way, London, E16 2RD | Tel: 0208 223 3081