

Anti-ABCC10 antibody (810-890 Internal) (STJ94207)

STJ94207

GENERAL INFORMATION

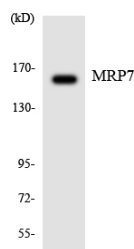
Product Type	Primary antibodies
Short Description	Rabbit polyclonal antibody anti-Atp-Binding Cassette Sub-Family C Member 10 (810-890 Internal) is suitable for use in Western Blot and ELISA research applications.
Applications	WB, ELISA
Host/Source	Rabbit
Reactivity	Human, Monkey

PRODUCT PROPERTIES

Clonality	Polyclonal
Clone ID	
Concentration	1 mg/mL
Conjugation	Unconjugated
Purification	The antibody was affinity-purified from rabbit anti-serum by affinity-chromatography.
Dilution Range	WB 1:500-1:2000 ELISA 1:40000
Formulation	PBS, 50% Glycerol, 0.5% BSA and 0.02% Sodium Azide.
Isotype	IgG
Storage Instruction	Store at -20°C for up to 1 year from the date of receipt, and avoid repeat freeze-thaw cycles.

TARGET INFORMATION

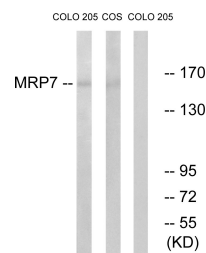
Gene ID	89845
Gene Symbol	ABCC10
Uniprot ID	MRP7_HUMAN
Immunogen	The antiserum was produced against synthesized peptide derived from human MRP7 at amino acid range 835-884
Immunogen Region	810-890 Internal
Specificity	ABCC10 polyclonal antibody (Atp-Binding Cassette Sub-Family C Member 10) binds to endogenous Atp-Binding Cassette Sub-Family C Member 10 at the amino acid region 810-890 Internal.
Immunogen Sequence	



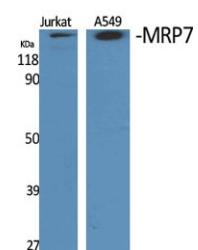
Western blot analysis of the lysates from HepG2 cells using MRP7 antibody.



Western blot analysis of COS7 cells using MRP7 Polyclonal Antibody diluted at 1: 1000



Western blot analysis of lysates from COLO and COS7 cells, using MRP7 Antibody. The lane on the right is blocked with the synthesized peptide.



Western blot analysis of various cells using MRP7 Polyclonal Antibody diluted at 1: 1000

This product is suitable for in-vitro studies under the RESEARCH USE ONLY [RUO] licence. This product must not be used as for diagnostic or other medical purposes.
St John's Laboratory Ltd, Knowledge Dock Business Centre, University Way, London, E16 2RD | Tel: 0208 223 3081