

Anti-ABCC3 antibody (940-1020 Internal) (STJ94206)

STJ94206

GENERAL INFORMATION

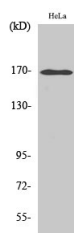
Product Type	Primary antibodies
Short Description	Rabbit polyclonal antibody anti-Atp-Binding Cassette Sub-Family C Member 3 (940-1020 Internal) is suitable for use in Western Blot and ELISA research applications.
Applications	WB, ELISA
Host/Source	Rabbit
Reactivity	Human, Rat, Mouse

PRODUCT PROPERTIES

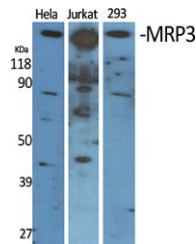
Clonality	Polyclonal
Clone ID	
Concentration	1 mg/mL
Conjugation	Unconjugated
Purification	The antibody was affinity-purified from rabbit anti-serum by affinity-chromatography.
Dilution Range	WB 1:500-1:2000 ELISA 1:5000
Formulation	PBS, 50% Glycerol, 0.5% BSA and 0.02% Sodium Azide.
Isotype	IgG
Storage Instruction	Store at -20°C for up to 1 year from the date of receipt, and avoid repeat freeze-thaw cycles.

TARGET INFORMATION

Gene ID	8714
Gene Symbol	ABCC3
Uniprot ID	MRP3_HUMAN
Immunogen	The antiserum was produced against synthesized peptide derived from human ABCC3 at amino acid range 971-1020
Immunogen Region	940-1020 Internal
Specificity	ABCC3 polyclonal antibody (Atp-Binding Cassette Sub-Family C Member 3) binds to endogenous Atp-Binding Cassette Sub-Family C Member 3 at the amino acid region 940-1020 Internal.
Immunogen Sequence	



Western blot analysis of HepG2 cells using MRP3 Polyclonal Antibody diluted at 1: 2000



Western blot analysis of various cells using MRP3 Polyclonal Antibody diluted at 1: 2000

This product is suitable for in-vitro studies under the RESEARCH USE ONLY [RUO] licence. This product must not be used as for diagnostic or other medical purposes.
St John's Laboratory Ltd, Knowledge Dock Business Centre, University Way, London, E16 2RD | Tel: 0208 223 3081