

## Anti-MRGPRX4 antibody (240-320 C-Term) (STJ94202)

STJ94202

### GENERAL INFORMATION

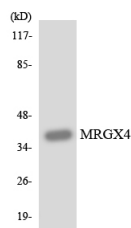
<b>Product Type</b>	Primary antibodies
<b>Short Description</b>	Rabbit polyclonal antibody anti-Mas-Related G-Protein Coupled Receptor Member X4 (240-320 C-Term) is suitable for use in Western Blot, Immunofluorescence, Immunocytochemistry and ELISA research applications.
<b>Applications</b>	WB, IF, ICC, ELISA
<b>Host/Source</b>	Rabbit
<b>Reactivity</b>	Human, Rat, Mouse

### PRODUCT PROPERTIES

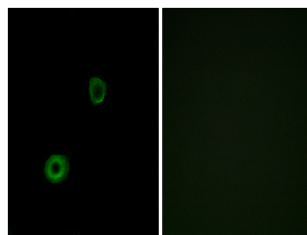
<b>Clonality</b>	Polyclonal
<b>Clone ID</b>	
<b>Concentration</b>	1 mg/mL
<b>Conjugation</b>	Unconjugated
<b>Purification</b>	The antibody was affinity-purified from rabbit anti-serum by affinity-chromatography.
<b>Dilution Range</b>	WB 1:500-1:2000 IF 1:200-1:1000 ELISA 1:40000
<b>Formulation</b>	PBS, 50% Glycerol, 0.5% BSA and 0.02% Sodium Azide.
<b>Isotype</b>	IgG
<b>Storage Instruction</b>	Store at -20°C for up to 1 year from the date of receipt, and avoid repeat freeze-thaw cycles.

### TARGET INFORMATION

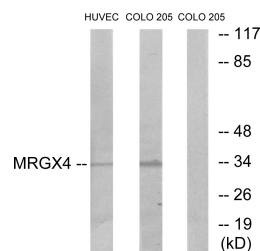
<b>Gene ID</b>	117196
<b>Gene Symbol</b>	MRGPRX4
<b>Uniprot ID</b>	MRGX4_HUMAN
<b>Immunogen</b>	The antiserum was produced against synthesized peptide derived from human MRGX4 at amino acid range 271-320
<b>Immunogen Region</b>	240-320 C-Term
<b>Specificity</b>	MRGPRX4 polyclonal antibody (Mas-Related G-Protein Coupled Receptor Member X4) binds to endogenous Mas-Related G-Protein Coupled Receptor Member X4 at the amino acid region 240-320 C-Term.
<b>Immunogen Sequence</b>	



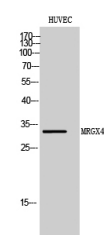
Western blot analysis of the lysates from HUVEC cells using MRGX4 antibody.



Immunofluorescence analysis of A549 cells, using MRGX4 Antibody. The picture on the right is blocked with the synthesized peptide.



Western blot analysis of lysates from HUVEC and COLO cells, using MRGX4 Antibody. The lane on the right is blocked with the synthesized peptide.



Western blot analysis of HUVEC cells using MRGX4 Polyclonal Antibody

This product is suitable for in-vitro studies under the RESEARCH USE ONLY [RUO] licence. This product must not be used as for diagnostic or other medical purposes.  
St John's Laboratory Ltd, Knowledge Dock Business Centre, University Way, London, E16 2RD | Tel: 0208 223 3081