

## Anti-MRGPRX1 antibody (240-320 C-Term) (STJ94200)

STJ94200

### GENERAL INFORMATION

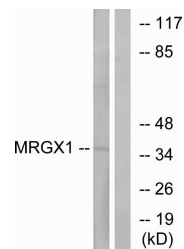
<b>Product Type</b>	Primary antibodies
<b>Short Description</b>	Rabbit polyclonal antibody anti-Mas-Related G-Protein Coupled Receptor Member X1 (240-320 C-Term) is suitable for use in Western Blot, Immunofluorescence, Immunocytochemistry and ELISA research applications.
<b>Applications</b>	WB, IF, ICC, ELISA
<b>Host/Source</b>	Rabbit
<b>Reactivity</b>	Human, Rat, Mouse

### PRODUCT PROPERTIES

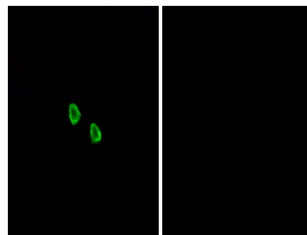
<b>Clonality</b>	Polyclonal
<b>Clone ID</b>	
<b>Concentration</b>	1 mg/mL
<b>Conjugation</b>	Unconjugated
<b>Purification</b>	The antibody was affinity-purified from rabbit anti-serum by affinity-chromatography.
<b>Dilution Range</b>	WB 1:500-1:2000 IF 1:200-1:1000 ELISA 1:5000
<b>Formulation</b>	PBS, 50% Glycerol, 0.5% BSA and 0.02% Sodium Azide.
<b>Isotype</b>	IgG
<b>Storage Instruction</b>	Store at -20°C for up to 1 year from the date of receipt, and avoid repeat freeze-thaw cycles.

### TARGET INFORMATION

<b>Gene ID</b>	259249
<b>Gene Symbol</b>	MRGPRX1
<b>Uniprot ID</b>	MRGX1_HUMAN
<b>Immunogen Region</b>	The antiserum was produced against synthesized peptide derived from human MRGX1 at amino acid range 271-320
<b>Specificity</b>	MRGPRX1 polyclonal antibody (Mas-Related G-Protein Coupled Receptor Member X1) binds to endogenous Mas-Related G-Protein Coupled Receptor Member X1 at the amino acid region 240-320 C-Term.
<b>Immunogen Sequence</b>	



Western blot analysis of lysates from MCF-7 cells, using MRGX1 Antibody. The lane on the right is blocked with the synthesized peptide.



Immunofluorescence analysis of HepG2 cells, using MRGX1 Antibody. The picture on the right is blocked with the synthesized peptide.