

Anti-MRGPRG antibody (200-280 C-Term) (STJ94199)

STJ94199

GENERAL INFORMATION

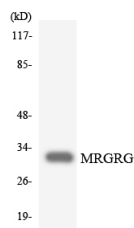
Product Type	Primary antibodies
Short Description	Rabbit polyclonal antibody anti-Mas-Related G-Protein Coupled Receptor Member G (200-280 C-Term) is suitable for use in Western Blot, Immunofluorescence, Immunocytochemistry and ELISA research applications.
Applications	WB, IF, ICC, ELISA
Host/Source	Rabbit
Reactivity	Human, Rat, Mouse

PRODUCT PROPERTIES

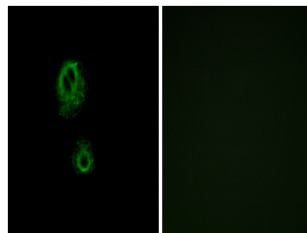
Clonality	Polyclonal
Clone ID	
Concentration	1 mg/mL
Conjugation	Unconjugated
Purification	The antibody was affinity-purified from rabbit anti-serum by affinity-chromatography.
Dilution Range	WB 1:500-1:2000 IF 1:200-1:1000 ELISA 1:40000
Formulation	PBS, 50% Glycerol, 0.5% BSA and 0.02% Sodium Azide.
Isotype	IgG
Storage Instruction	Store at 20°C for up to 1 year from the date of receipt, and avoid repeat freeze-thaw cycles.

TARGET INFORMATION

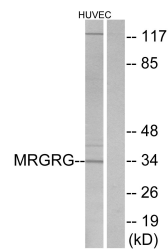
Gene ID	386746
Gene Symbol	MRGPRG
Uniprot ID	MRGPRG_HUMAN
Immunogen	The antiserum was produced against synthesized peptide derived from human MRGPRG at amino acid range 231-280
Immunogen Region	200-280 C-Term
Specificity	MRGPRG polyclonal antibody (Mas-Related G-Protein Coupled Receptor Member G) binds to endogenous Mas-Related G-Protein Coupled Receptor Member G at the amino acid region 200-280 C-Term.
Immunogen Sequence	



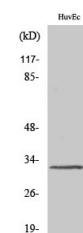
Western blot analysis of the lysates from HepG2 cells using MRGPRG antibody.



Immunofluorescence analysis of A549 cells, using MRGPRG Antibody. The picture on the right is blocked with the synthesized peptide.



Western blot analysis of lysates from HUVEC cells, using MRGPRG Antibody. The lane on the right is blocked with the synthesized peptide.



Western blot analysis of various cells using MRGPRG Polyclonal Antibody

This product is suitable for in-vitro studies under the RESEARCH USE ONLY [RUO] licence. This product must not be used as for diagnostic or other medical purposes.
St John's Laboratory Ltd, Knowledge Dock Business Centre, University Way, London, E16 2RD | Tel: 0208 223 3081