

Anti-MRGPRF antibody (240-320 C-Term) (STJ94198)

STJ94198

GENERAL INFORMATION

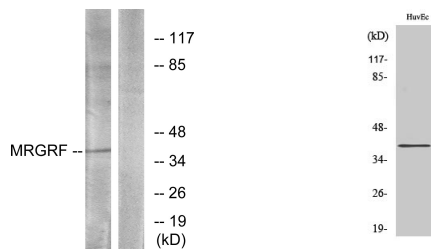
Product Type	Primary antibodies
Short Description	Rabbit polyclonal antibody anti-Mas-Related G-Protein Coupled Receptor Member F (240-320 C-Term) is suitable for use in Western Blot, Immunofluorescence, Immunocytochemistry and ELISA research applications.
Applications	WB, IF, ICC, ELISA
Host/Source	Rabbit
Reactivity	Human, Mouse, Rat

PRODUCT PROPERTIES

Clonality	Polyclonal
Clone ID	
Concentration	1 mg/mL
Conjugation	Unconjugated
Purification	The antibody was affinity-purified from rabbit anti-serum by affinity-chromatography.
Dilution Range	WB 1:500-1:2000 IF 1:200-1:1000 ELISA 1:5000
Formulation	PBS, 50% Glycerol, 0.5% BSA and 0.02% Sodium Azide.
Isotype	IgG
Storage Instruction	Store at -20°C for up to 1 year from the date of receipt, and avoid repeat freeze-thaw cycles.

TARGET INFORMATION

Gene ID	116535
Gene Symbol	MRGPRF
Uniprot ID	MRGRF_HUMAN
Immunogen	The antiserum was produced against synthesized peptide derived from human MRGRF at amino acid range 271-320
Immunogen Region	240-320 C-Term
Specificity	MRGPRF polyclonal antibody (Mas-Related G-Protein Coupled Receptor Member F) binds to endogenous Mas-Related G-Protein Coupled Receptor Member F at the amino acid region 240-320 C-Term.
Immunogen Sequence	



Western blot analysis of lysates from HUVEC cells, using MRGRF Antibody. The lane on the right is blocked with the synthesized peptide.

Western blot analysis of various cells using MRGRF Polyclonal Antibody

This product is suitable for in-vitro studies under the RESEARCH USE ONLY [RUO] licence. This product must not be used as for diagnostic or other medical purposes.
St John's Laboratory Ltd, Knowledge Dock Business Centre, University Way, London, E16 2RD | Tel: 0208 223 3081