

## Anti-MRGPRES antibody (140-220 Internal) (STJ94197)

STJ94197

### GENERAL INFORMATION

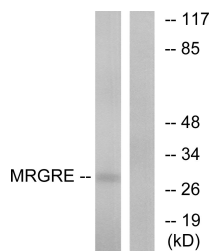
<b>Product Type</b>	Primary antibodies
<b>Short Description</b>	Rabbit polyclonal antibody anti-Mas-Related G-Protein Coupled Receptor Member E (140-220 Internal) is suitable for use in Western Blot and ELISA research applications.
<b>Applications</b>	WB, ELISA
<b>Host/Source</b>	Rabbit
<b>Reactivity</b>	Human, Mouse, Rat

### PRODUCT PROPERTIES

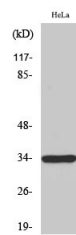
<b>Clonality</b>	Polyclonal
<b>Clone ID</b>	
<b>Concentration</b>	1 mg/mL
<b>Conjugation</b>	Unconjugated
<b>Purification</b>	The antibody was affinity-purified from rabbit anti-serum by affinity-chromatography.
<b>Dilution</b>	WB 1:500-1:2000
<b>Range</b>	ELISA 1:40000
<b>Formulation</b>	PBS, 50% Glycerol, 0.5% BSA and 0.02% Sodium Azide.
<b>Isotype</b>	IgG
<b>Storage Instruction</b>	Store at -20°C for up to 1 year from the date of receipt, and avoid repeat freeze-thaw cycles.

### TARGET INFORMATION

<b>Gene ID</b>	116534
<b>Gene Symbol</b>	MRGPRES
<b>Uniprot ID</b>	MRGRE_HUMAN
<b>Immunogen</b>	The antiserum was produced against synthesized peptide derived from human MRGRE at amino acid range 171-220
<b>Immunogen Region</b>	140-220 Internal
<b>Specificity</b>	MRGPRES polyclonal antibody (Mas-Related G-Protein Coupled Receptor Member E) binds to endogenous Mas-Related G-Protein Coupled Receptor Member E at the amino acid region 140-220 Internal.
<b>Immunogen Sequence</b>	



Western blot analysis of lysates from HeLa cells, using MRGRE Antibody. The lane on the right is blocked with the synthesized peptide.



Western blot analysis of various cells using MRGRE Polyclonal Antibody

This product is suitable for in-vitro studies under the RESEARCH USE ONLY [RUO] licence. This product must not be used as for diagnostic or other medical purposes.  
 St John's Laboratory Ltd, Knowledge Dock Business Centre, University Way, London, E16 2RD | Tel: 0208 223 3081