

Anti-PAQR7 antibody (270-350 C-Term) (STJ94190)

STJ94190

GENERAL INFORMATION

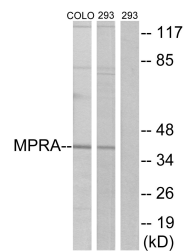
Product Type	Primary antibodies
Short Description	Rabbit polyclonal antibody anti-Membrane Progesterin Receptor Alpha (270-350 C-Term) is suitable for use in Western Blot, Immunofluorescence, Immunocytochemistry and ELISA research applications.
Applications	WB, IF, ICC, ELISA
Host/Source	Rabbit
Reactivity	Human, Rat, Mouse

PRODUCT PROPERTIES

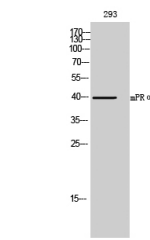
Clonality	Polyclonal
Clone ID	
Concentration	1 mg/mL
Conjugation	Unconjugated
Purification	The antibody was affinity-purified from rabbit anti-serum by affinity-chromatography.
Dilution Range	WB 1:500-1:2000 IF 1:200-1:1000 ELISA 1:5000
Formulation	PBS, 50% Glycerol, 0.5% BSA and 0.02% Sodium Azide.
Isotype	IgG
Storage Instruction	Store at -20°C for up to 1 year from the date of receipt, and avoid repeat freeze-thaw cycles.

TARGET INFORMATION

Gene ID	164091
Gene Symbol	PAQR7
Uniprot ID	PAQR7_HUMAN
Immunogen Region	The antiserum was produced against synthesized peptide derived from human MPRA at amino acid range 297-346
Immunogen Region	270-350 C-Term
Specificity	PAQR7 polyclonal antibody (Membrane Progesterin Receptor Alpha) binds to endogenous Membrane Progesterin Receptor Alpha at the amino acid region 270-350 C-Term.
Immunogen Sequence	



Western blot analysis of lysates from 293 and COLO cells, using MPRA Antibody. The lane on the right is blocked with the synthesized peptide.



Western blot analysis of 293 cells using mPR Alpha Polyclonal Antibody

This product is suitable for in-vitro studies under the RESEARCH USE ONLY [RUO] licence. This product must not be used as for diagnostic or other medical purposes.
St John's Laboratory Ltd, Knowledge Dock Business Centre, University Way, London, E16 2RD | Tel: 0208 223 3081