

Anti-MPHOSPH9 antibody (510-590 C-Term) (STJ94189)

STJ94189

GENERAL INFORMATION

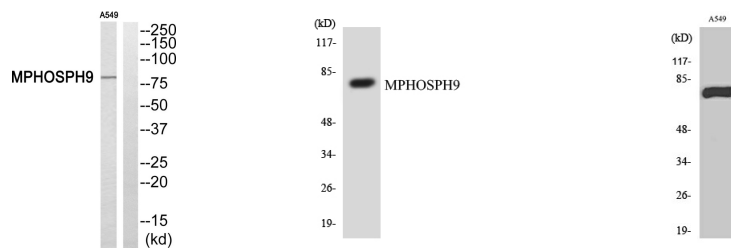
Product Type	Primary antibodies
Short Description	Rabbit polyclonal antibody anti-M-Phase Phosphoprotein 9 (510-590 C-Term) is suitable for use in Western Blot and ELISA research applications.
Applications	WB, ELISA
Host/Source	Rabbit
Reactivity	Human, Rat, Mouse

PRODUCT PROPERTIES

Clonality	Polyclonal
Clone ID	
Concentration	1 mg/mL
Conjugation	Unconjugated
Purification	The antibody was affinity-purified from rabbit anti-serum by affinity-chromatography.
Dilution Range	WB 1:500-1:2000 ELISA 1:20000
Formulation	PBS, 50% Glycerol, 0.5% BSA and 0.02% Sodium Azide.
Isotype	IgG
Storage	Store at -20°C for up to 1 year from the date of receipt, and avoid repeat freeze-thaw cycles.
Instruction	

TARGET INFORMATION

Gene ID	10198
Gene Symbol	MPHOSPH9
Uniprot ID	MPP9_HUMAN
Immunogen	The antiserum was produced against synthesized peptide derived from human MPHOSPH9 at amino acid range 539-588
Immunogen Region	510-590 C-Term
Specificity	MPHOSPH9 polyclonal antibody (M-Phase Phosphoprotein 9) binds to endogenous M-Phase Phosphoprotein 9 at the amino acid region 510-590 C-Term.
Immunogen Sequence	



Western blot analysis of MPHOSPH9 Antibody. The lane on the right is blocked with the MPHOSPH9 peptide.

Western blot analysis of the lysates from COLO205 cells using MPHOSPH9 antibody.

Western blot analysis of various cells using MPP9 Polyclonal Antibody

This product is suitable for in-vitro studies under the RESEARCH USE ONLY [RUO] licence. This product must not be used as for diagnostic or other medical purposes.
St John's Laboratory Ltd, Knowledge Dock Business Centre, University Way, London, E16 2RD | Tel: 0208 223 3081