

Anti-ATP5MJ antibody (30-110 Internal) (STJ94187)

STJ94187

GENERAL INFORMATION

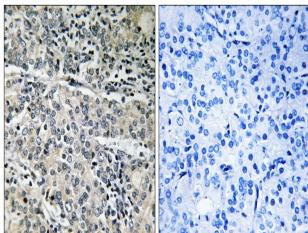
Product Type	Primary antibodies
Short Description	Rabbit polyclonal antibody anti-Atp Synthase Subunit Atp5mj-Mitochondrial (30-110 Internal) is suitable for use in Immunohistochemistry, Immunofluorescence and ELISA research applications.
Applications	IHC-P, IF-P, ELISA
Host/Source	Rabbit
Reactivity	Human, Mouse

PRODUCT PROPERTIES

Clonality	Polyclonal
Clone ID	
Concentration	1 mg/mL
Conjugation	Unconjugated
Purification	The antibody was affinity-purified from rabbit anti-serum by affinity-chromatography.
Dilution Range	IHC 1:100-1:300 ELISA 1:20000
Formulation	PBS, 50% Glycerol, 0.5% BSA and 0.02% Sodium Azide.
Isotype	IgG
Storage	Store at -20°C for up to 1 year from the date of receipt, and avoid repeat freeze-thaw cycles.
Instruction	

TARGET INFORMATION

Gene ID	9556
Gene Symbol	ATP5MJ
Uniprot ID	ATP68_HUMAN
Immunogen	The antiserum was produced against synthesized peptide derived from human MP68 at amino acid range 9-58
Immunogen Region	30-110 Internal
Specificity	ATP5MJ polyclonal antibody (Atp Synthase Subunit Atp5mj-Mitochondrial) binds to endogenous Atp Synthase Subunit Atp5mj-Mitochondrial at the amino acid region 30-110 Internal.
Immunogen Sequence	



Immunohistochemistry analysis of paraffin-embedded human prostate carcinoma tissue, using MP68 Antibody. The picture on the right is blocked with the synthesized peptide.