

Anti-MEOX2 antibody (120-200 Internal) (STJ94186)

STJ94186

GENERAL INFORMATION

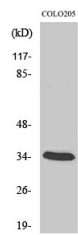
Product Type	Primary antibodies
Short Description	Rabbit polyclonal antibody anti-Homeobox Protein Mox-2 (120-200 Internal) is suitable for use in Western Blot, Immunohistochemistry, Immunofluorescence and ELISA research applications.
Applications	WB, IHC-P, IF-P, ELISA
Host/Source	Rabbit
Reactivity	Human, Mouse, Rat

PRODUCT PROPERTIES

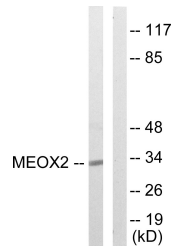
Clonality	Polyclonal
Clone ID	
Concentration	1 mg/mL
Conjugation	Unconjugated
Purification	The antibody was affinity-purified from rabbit anti-serum by affinity-chromatography.
Dilution Range	WB 1:500-1:2000 IHC 1:100-1:300 ELISA 1:10000
Formulation	PBS, 50% Glycerol, 0.5% BSA and 0.02% Sodium Azide.
Isotype	IgG
Storage Instruction	Store at -20°C for up to 1 year from the date of receipt, and avoid repeat freeze-thaw cycles.

TARGET INFORMATION

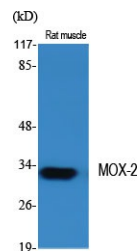
Gene ID	4223
Gene Symbol	MEOX2
Uniprot ID	MEOX2_HUMAN
Immunogen	The antiserum was produced against synthesized peptide derived from human MEOX2 at amino acid range 151-200
Immunogen Region	120-200 Internal
Specificity	MEOX2 polyclonal antibody (Homeobox Protein Mox-2) binds to endogenous Homeobox Protein Mox-2 at the amino acid region 120-200 Internal.
Immunogen Sequence	



Western blot analysis of COLO205 cells using MOX-2 Polyclonal Antibody diluted at 1: 2000



Western blot analysis of lysates from COLO205 cells, using MOX2 Antibody. The lane on the right is blocked with the synthesized peptide.



Western blot analysis of various cells using MOX-2 Polyclonal Antibody diluted at 1: 2000

This product is suitable for in-vitro studies under the RESEARCH USE ONLY [RUO] licence. This product must not be used as for diagnostic or other medical purposes.
St John's Laboratory Ltd, Knowledge Dock Business Centre, University Way, London, E16 2RD | Tel: 0208 223 3081