

Anti-MOS antibody (30-110 Internal) (STJ94183)

STJ94183

GENERAL INFORMATION

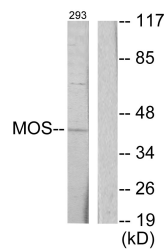
Product Type	Primary antibodies
Short Description	Rabbit polyclonal antibody anti-Proto-Oncogene Serine/Threonine-Protein Kinase Mos (30-110 Internal) is suitable for use in Western Blot, Immunofluorescence, Immunocytochemistry and ELISA research applications.
Applications	WB, IF, ICC, ELISA
Host/Source	Rabbit
Reactivity	Human, Rat, Mouse

PRODUCT PROPERTIES

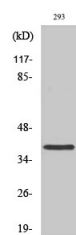
Clonality	Polyclonal
Clone ID	
Concentration	1 mg/mL
Conjugation	Unconjugated
Purification	The antibody was affinity-purified from rabbit anti-serum by affinity-chromatography.
Dilution Range	WB 1:500-1:2000 IF 1:200-1:1000 ELISA 1:10000
Formulation	PBS, 50% Glycerol, 0.5% BSA and 0.02% Sodium Azide.
Isotype	IgG
Storage Instruction	Store at 20°C for up to 1 year from the date of receipt, and avoid repeat freeze-thaw cycles.

TARGET INFORMATION

Gene ID	4342
Gene Symbol	MOS
Uniprot ID	MOS_HUMAN
Immunogen Region	The antiserum was produced against synthesized peptide derived from human MOS at amino acid range 61-110 30-110 Internal
Specificity	MOS polyclonal antibody (Proto-Oncogene Serine/Threonine-Protein Kinase Mos) binds to endogenous Proto-Oncogene Serine/Threonine-Protein Kinase Mos at the amino acid region 30-110 Internal.
Immunogen Sequence	



Western blot analysis of lysates from 293 cells, using MOS Antibody. The lane on the right is blocked with the synthesized peptide.



Western blot analysis of various cells using Mos Polyclonal Antibody

This product is suitable for in-vitro studies under the RESEARCH USE ONLY [RUO] licence. This product must not be used as for diagnostic or other medical purposes.
St John's Laboratory Ltd, Knowledge Dock Business Centre, University Way, London, E16 2RD | Tel: 0208 223 3081