

Anti-MOB1B antibody (70-150 Internal) (STJ94175)

STJ94175

GENERAL INFORMATION

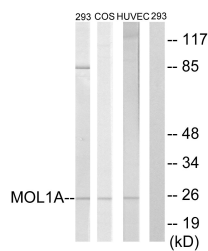
Product Type	Primary antibodies
Short Description	Rabbit polyclonal antibody anti-Mob Kinase Activator 1b (70-150 Internal) is suitable for use in Western Blot, Immunohistochemistry, Immunofluorescence and ELISA research applications.
Applications	WB, IHC-P, IF-P, ELISA
Host/Source	Rabbit
Reactivity	Human, Mouse, Monkey

PRODUCT PROPERTIES

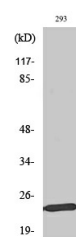
Clonality	Polyclonal
Clone ID	
Concentration	1 mg/mL
Conjugation	Unconjugated
Purification	The antibody was affinity-purified from rabbit anti-serum by affinity-chromatography.
Dilution Range	WB 1:500-1:2000 IHC 1:100-1:300 ELISA 1:40000
Formulation	PBS, 50% Glycerol, 0.5% BSA and 0.02% Sodium Azide.
Isotype	IgG
Storage Instruction	Store at -20°C for up to 1 year from the date of receipt, and avoid repeat freeze-thaw cycles.

TARGET INFORMATION

Gene ID	92597
Gene Symbol	MOB1B
Uniprot ID	MOB1B_HUMAN
Immunogen	The antiserum was produced against synthesized peptide derived from human MOL1A at amino acid range 101-150
Immunogen Region	70-150 Internal
Specificity	MOB1B polyclonal antibody (Mob Kinase Activator 1b) binds to endogenous Mob Kinase Activator 1b at the amino acid region 70-150 Internal.
Immunogen Sequence	



Western blot analysis of lysates from 293, COS7, and HUVEC cells, treated with IFN 2500U/ml 30', using MOL1A Antibody. The lane on the right is blocked with the synthesized peptide.



Western blot analysis of various cells using Mob1A Polyclonal Antibody