

Anti-MKNK2 antibody (Internal) (STJ94173)

STJ94173

GENERAL INFORMATION

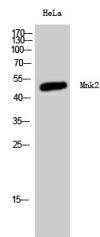
Product Type	Primary antibodies
Short Description	Rabbit polyclonal antibody anti-Map Kinase-Interacting Serine/Threonine-Protein Kinase 2 (Internal) is suitable for use in Western Blot and ELISA research applications.
Applications	WB, ELISA
Host/Source	Rabbit
Reactivity	Human, Mouse, Rat

PRODUCT PROPERTIES

Clonality	Polyclonal
Clone ID	
Concentration	1 mg/mL
Conjugation	Unconjugated
Purification	The antibody was affinity-purified from rabbit anti-serum by affinity-chromatography.
Dilution	WB 1:500-1:2000
Range	ELISA 1:40000
Formulation	PBS, 50% Glycerol, 0.5% BSA and 0.02% Sodium Azide.
Isotype	IgG
Storage	Store at -20°C for up to 1 year from the date of receipt, and avoid repeat freeze-thaw cycles.
Instruction	

TARGET INFORMATION

Gene ID	2872
Gene Symbol	MKNK2
Uniprot ID	MKNK2_HUMAN
Immunogen	Synthesized peptide derived from the Internal region of human Mnk2.
Immunogen Region	Internal
Specificity	MKNK2 polyclonal antibody (Map Kinase-Interacting Serine/Threonine-Protein Kinase 2) binds to endogenous Map Kinase-Interacting Serine/Threonine-Protein Kinase 2 at the amino acid region Internal.
Immunogen Sequence	



Western blot analysis of HeLa cells using Mnk2 Polyclonal Antibody

This product is suitable for in-vitro studies under the RESEARCH USE ONLY [RUO] licence. This product must not be used as for diagnostic or other medical purposes.
St John's Laboratory Ltd, Knowledge Dock Business Centre, University Way, London, E16 2RD | Tel: 0208 223 3081