

Anti-MKNK1 antibody (80-160 Internal) (STJ94170)

STJ94170

GENERAL INFORMATION

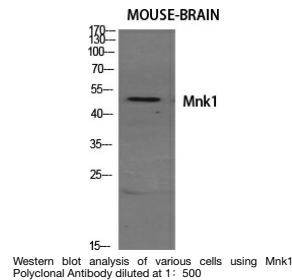
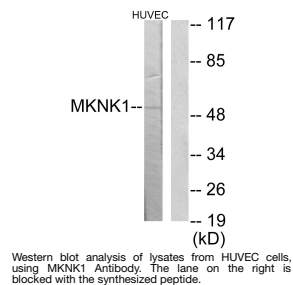
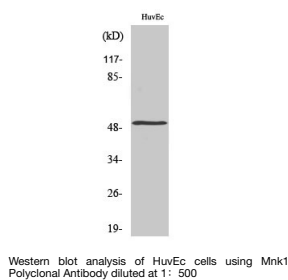
Product Type	Primary antibodies
Short Description	Rabbit polyclonal antibody anti-Map Kinase-Interacting Serine/Threonine-Protein Kinase 1 (80-160 Internal) is suitable for use in Western Blot, Immunohistochemistry, Immunofluorescence and ELISA research applications.
Applications	WB, IHC-P, IF-P, ELISA
Host/Source	Rabbit
Reactivity	Human, Mouse

PRODUCT PROPERTIES

Clonality	Polyclonal
Clone ID	
Concentration	1 mg/mL
Conjugation	Unconjugated
Purification	The antibody was affinity-purified from rabbit anti-serum by affinity-chromatography.
Dilution Range	WB 1:500-1:2000 IHC 1:100-1:300 ELISA 1:20000
Formulation	PBS, 50% Glycerol, 0.5% BSA and 0.02% Sodium Azide.
Isotype	IgG
Storage Instruction	Store at 20°C for up to 1 year from the date of receipt, and avoid repeat freeze-thaw cycles.

TARGET INFORMATION

Gene ID	8569
Gene Symbol	MKNK1
Uniprot ID	MKNK1_HUMAN
Immunogen	The antiserum was produced against synthesized peptide derived from human MKNK1 at amino acid range 111-160
Immunogen Region	80-160 Internal
Specificity	MKNK1 polyclonal antibody (Map Kinase-Interacting Serine/Threonine-Protein Kinase 1) binds to endogenous Map Kinase-Interacting Serine/Threonine-Protein Kinase 1 at the amino acid region 80-160 Internal.
Immunogen Sequence	



This product is suitable for in-vitro studies under the RESEARCH USE ONLY [RUO] licence. This product must not be used as for diagnostic or other medical purposes.
St John's Laboratory Ltd, Knowledge Dock Business Centre, University Way, London, E16 2RD | Tel: 0208 223 3081