

Anti-MNDA antibody (350-430 C-Term) (STJ94168)

STJ94168

GENERAL INFORMATION

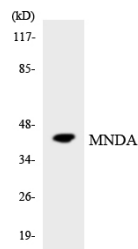
Product Type	Primary antibodies
Short Description	Rabbit polyclonal antibody anti-Myeloid Cell Nuclear Differentiation antigen (350-430 C-Term) is suitable for use in Western Blot, Immunohistochemistry, Immunofluorescence and ELISA research applications.
Applications	WB, IHC-P, IF-P, ELISA
Host/Source	Rabbit
Reactivity	Human, Rat, Mouse

PRODUCT PROPERTIES

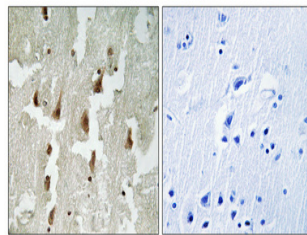
Clonality	Polyclonal
Clone ID	
Concentration	1 mg/mL
Conjugation	Unconjugated
Purification	The antibody was affinity-purified from rabbit anti-serum by affinity-chromatography.
Dilution Range	WB 1:500-1:2000 IHC 1:100-1:300 ELISA 1:40000
Formulation	PBS, 50% Glycerol, 0.5% BSA and 0.02% Sodium Azide.
Isotype	IgG
Storage Instruction	Store at -20°C for up to 1 year from the date of receipt, and avoid repeat freeze-thaw cycles.

TARGET INFORMATION

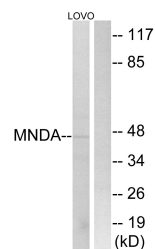
Gene ID	4332
Gene Symbol	MNDA
Uniprot ID	MNDA_HUMAN
Immunogen	The antiserum was produced against synthesized peptide derived from human MNDA at amino acid range 358-407
Immunogen Region	350-430 C-Term
Specificity	MNDA polyclonal antibody (Myeloid Cell Nuclear Differentiation Antigen) binds to endogenous Myeloid Cell Nuclear Differentiation Antigen at the amino acid region 350-430 C-Term.
Immunogen Sequence	



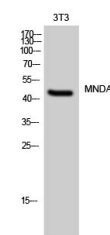
Western blot analysis of the lysates from 293 cells using MNDA antibody.



Immunohistochemical analysis of paraffin-embedded human brain. Antibody was diluted at 1:100 (4°C overnight). High-pressure and temperature Tris-EDTA, pH8.0 was used for antigen retrieval. Negative control (right) obtained from antibody was pre-absorbed by immunogen peptide.



Western blot analysis of lysates from LOVO cells, using MNDA Antibody. The lane on the right is blocked with the synthesized peptide.



Western blot analysis of 3T3 cells using MNDA Polyclonal Antibody diluted at 1: 500

This product is suitable for in-vitro studies under the RESEARCH USE ONLY [RUO] licence. This product must not be used as for diagnostic or other medical purposes.
St John's Laboratory Ltd, Knowledge Dock Business Centre, University Way, London, E16 2RD | Tel: 0208 223 3081