

Anti-MN1 antibody (790-870 Internal) (STJ94167)

STJ94167

GENERAL INFORMATION

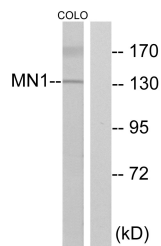
Product Type	Primary antibodies
Short Description	Rabbit polyclonal antibody anti-Transcriptional Activator Mn1 (790-870 Internal) is suitable for use in Western Blot and ELISA research applications.
Applications	WB, ELISA
Host/Source	Rabbit
Reactivity	Human, Rat, Mouse

PRODUCT PROPERTIES

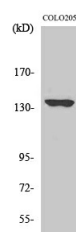
Clonality	Polyclonal
Clone ID	
Concentration	1 mg/mL
Conjugation	Unconjugated
Purification	The antibody was affinity-purified from rabbit anti-serum by affinity-chromatography.
Dilution Range	WB 1:500-1:2000 ELISA 1:40000
Formulation	PBS, 50% Glycerol, 0.5% BSA and 0.02% Sodium Azide.
Isotype	IgG
Storage	Store at -20°C for up to 1 year from the date of receipt, and avoid repeat freeze-thaw cycles.
Instruction	

TARGET INFORMATION

Gene ID	4330
Gene Symbol	MN1
Uniprot ID	MN1_HUMAN
Immunogen	The antiserum was produced against synthesized peptide derived from human MN1 at amino acid range 821-870
Immunogen Region	790-870 Internal
Specificity	MN1 polyclonal antibody (Transcriptional Activator Mn1) binds to endogenous Transcriptional Activator Mn1 at the amino acid region 790-870 Internal.
Immunogen Sequence	



Western blot analysis of lysates from COLO cells, using MN1 Antibody. The lane on the right is blocked with the synthesized peptide.



Western blot analysis of various cells using MN1 Polyclonal Antibody diluted at 1: 2000