

Anti-MMTAG2 antibody (10-90 N-Term) (STJ94166)

STJ94166

GENERAL INFORMATION

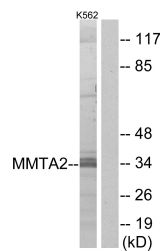
Product Type	Primary antibodies
Short Description	Rabbit polyclonal antibody anti-Multiple Myeloma Tumor-Associated Protein 2 (10-90 N-Term) is suitable for use in Western Blot and ELISA research applications.
Applications	WB, ELISA
Host/Source	Rabbit
Reactivity	Human, Mouse, Rat

PRODUCT PROPERTIES

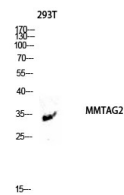
Clonality	Polyclonal
Clone ID	
Concentration	1 mg/mL
Conjugation	Unconjugated
Purification	The antibody was affinity-purified from rabbit anti-serum by affinity-chromatography.
Dilution Range	WB 1:500-1:2000 ELISA 1:5000
Formulation	PBS, 50% Glycerol, 0.5% BSA and 0.02% Sodium Azide.
Isotype	IgG
Storage Instruction	Store at -20°C for up to 1 year from the date of receipt, and avoid repeat freeze-thaw cycles.

TARGET INFORMATION

Gene ID	79169
Gene Symbol	MMTAG2
Uniprot ID	MMTA2_HUMAN
Immunogen	The antiserum was produced against synthesized peptide derived from human MMTAG2 at amino acid range 10-59
Immunogen Region	10-90 N-Term
Specificity	MMTAG2 polyclonal antibody (Multiple Myeloma Tumor-Associated Protein 2) binds to endogenous Multiple Myeloma Tumor-Associated Protein 2 at the amino acid region 10-90 N-Term.
Immunogen Sequence	



Western blot analysis of lysates from K562 cells, using MMTAG2 Antibody. The lane on the right is blocked with the synthesized peptide.



Western blot analysis of 293T lysis using MMTAG2 antibody. Antibody was diluted at 1:1000

This product is suitable for in-vitro studies under the RESEARCH USE ONLY [RUO] licence. This product must not be used as for diagnostic or other medical purposes.
St John's Laboratory Ltd, Knowledge Dock Business Centre, University Way, London, E16 2RD | Tel: 0208 223 3081