

Anti-MMP23B antibody (310-390 C-Term) (STJ94164)

STJ94164

GENERAL INFORMATION

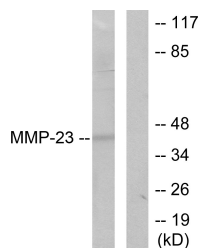
Product Type	Primary antibodies
Short Description	Rabbit polyclonal antibody anti-Matrix Metalloproteinase-23 (310-390 C-Term) is suitable for use in Western Blot and ELISA research applications.
Applications	WB, ELISA
Host/Source	Rabbit
Reactivity	Human, Mouse, Rat

PRODUCT PROPERTIES

Clonality	Polyclonal
Clone ID	
Concentration	1 mg/mL
Conjugation	Unconjugated
Purification	The antibody was affinity-purified from rabbit anti-serum by affinity-chromatography.
Dilution Range	WB 1:500-1:2000 ELISA 1:10000
Formulation	PBS, 50% Glycerol, 0.5% BSA and 0.02% Sodium Azide.
Isotype	IgG
Storage	Store at -20°C for up to 1 year from the date of receipt, and avoid repeat freeze-thaw cycles.
Instruction	

TARGET INFORMATION

Gene ID	8510
Gene Symbol	MMP23B
Uniprot ID	MMP23_HUMAN
Immunogen	The antiserum was produced against synthesized peptide derived from human MMP-23 at amino acid range 341-390
Immunogen Region	310-390 C-Term
Specificity	MMP23B polyclonal antibody (Matrix Metalloproteinase-23) binds to endogenous Matrix Metalloproteinase-23 at the amino acid region 310-390 C-Term.
Immunogen Sequence	



Western blot analysis of lysates from SKOV3 cells, using MMP-23 Antibody. The lane on the right is blocked with the synthesized peptide.