

Anti-MMP19 antibody (30-110 N-Term) (STJ94162)

STJ94162

GENERAL INFORMATION

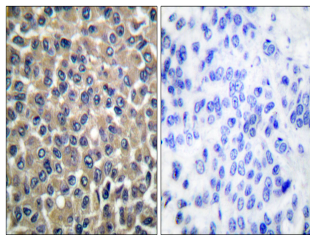
Product Type	Primary antibodies
Short Description	Rabbit polyclonal antibody anti-Matrix Metalloproteinase-19 (30-110 N-Term) is suitable for use in Western Blot, Immunohistochemistry, Immunofluorescence and ELISA research applications.
Applications	WB, IHC-P, IF-P, ELISA
Host/Source	Rabbit
Reactivity	Human, Mouse

PRODUCT PROPERTIES

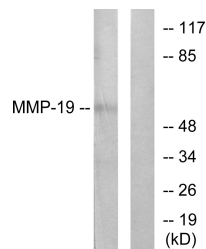
Clonality	Polyclonal
Clone ID	
Concentration	1 mg/mL
Conjugation	Unconjugated
Purification	The antibody was affinity-purified from rabbit anti-serum by affinity-chromatography.
Dilution Range	WB 1:500-1:2000 IHC 1:100-1:300 ELISA 1:10000
Formulation	PBS, 50% Glycerol, 0.5% BSA and 0.02% Sodium Azide.
Isotype	IgG
Storage Instruction	Store at -20°C for up to 1 year from the date of receipt, and avoid repeat freeze-thaw cycles.

TARGET INFORMATION

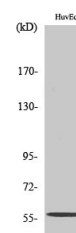
Gene ID	4327
Gene Symbol	MMP19
Uniprot ID	MMP19_HUMAN
Immunogen	The antiserum was produced against synthesized peptide derived from human MMP-19 at amino acid range 11-60
Immunogen Region	30-110 N-Term
Specificity	MMP19 polyclonal antibody (Matrix Metalloproteinase-19) binds to endogenous Matrix Metalloproteinase-19 at the amino acid region 30-110 N-Term.
Immunogen Sequence	



Immunohistochemistry analysis of paraffin-embedded human breast carcinoma tissue, using MMP-19 Antibody. The picture on the right is blocked with the synthesized peptide.



Western blot analysis of lysates from HUVEC cells, using MMP-19 Antibody. The lane on the right is blocked with the synthesized peptide.



Western blot analysis of various cells using MMP-19 Polyclonal Antibody diluted at 1: 500