

Anti-MAP3K11 antibody (610-690) (STJ94151)

STJ94151

GENERAL INFORMATION

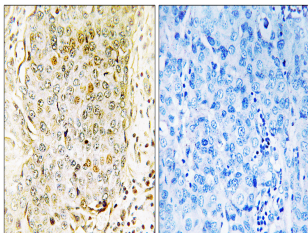
Product Type	Primary antibodies
Short Description	Rabbit polyclonal antibody anti-Mitogen-Activated Protein Kinase Kinase 11 (610-690) is suitable for use in Immunohistochemistry, Immunofluorescence and ELISA research applications.
Applications	IHC-P, IF-P, ELISA
Host/Source	Rabbit
Reactivity	Human, Mouse, Rat

PRODUCT PROPERTIES

Clonality	Polyclonal
Clone ID	
Concentration	1 mg/mL
Conjugation	Unconjugated
Purification	The antibody was affinity-purified from rabbit anti-serum by affinity-chromatography.
Dilution Range	IHC 1:100-1:300 ELISA 1:20000
Formulation	PBS, 50% Glycerol, 0.5% BSA and 0.02% Sodium Azide.
Isotype	IgG
Storage	Store at -20°C for up to 1 year from the date of receipt, and avoid repeat freeze-thaw cycles.
Instruction	

TARGET INFORMATION

Gene ID	4296
Gene Symbol	MAP3K11
Uniprot ID	M3K11_HUMAN
Immunogen	The antiserum was produced against synthesized peptide derived from human MLK3 at amino acid range 640-689
Immunogen Region	610-690
Specificity	MAP3K11 polyclonal antibody (Mitogen-Activated Protein Kinase Kinase 11) binds to endogenous Mitogen-Activated Protein Kinase Kinase Kinase 11 at the amino acid region 610-690.
Immunogen Sequence	



Immunohistochemistry analysis of paraffin-embedded human breast carcinoma tissue, using MLK3 Antibody. The picture on the right is blocked with the synthesized peptide.