

Anti-MAP3K10 antibody (360-440 Internal) (STJ94150)

STJ94150

GENERAL INFORMATION

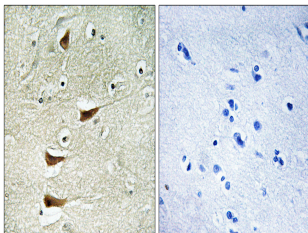
Product Type	Primary antibodies
Short Description	Rabbit polyclonal antibody anti-Mitogen-Activated Protein Kinase Kinase Kinase 10 (360-440 Internal) is suitable for use in Immunohistochemistry, Immunofluorescence and ELISA research applications.
Applications	IHC-P, IF-P, ELISA
Host/Source	Rabbit
Reactivity	Human, Mouse

PRODUCT PROPERTIES

Clonality	Polyclonal
Clone ID	
Concentration	1 mg/mL
Conjugation	Unconjugated
Purification	The antibody was affinity-purified from rabbit anti-serum by affinity-chromatography.
Dilution	IHC 1:100-1:300
Range	ELISA 1:20000
Formulation	PBS, 50% Glycerol, 0.5% BSA and 0.02% Sodium Azide.
Isotype	IgG
Storage	Store at -20°C for up to 1 year from the date of receipt, and avoid repeat freeze-thaw cycles.
Instruction	

TARGET INFORMATION

Gene ID	4294
Gene Symbol	MAP3K10
Uniprot ID	M3K10_HUMAN
Immunogen	The antiserum was produced against synthesized peptide derived from human MAP3K10 at amino acid range 391-440
Immunogen Region	360-440 Internal
Specificity	MAP3K10 polyclonal antibody (Mitogen-Activated Protein Kinase Kinase Kinase 10) binds to endogenous Mitogen-Activated Protein Kinase Kinase Kinase 10 at the amino acid region 360-440 Internal.
Immunogen Sequence	



Immunohistochemistry analysis of paraffin-embedded human brain tissue, using MAP3K10 Antibody. The picture on the right is blocked with the synthesized peptide.