

Anti-MLK1/2 antibody (250-330) (STJ94149)

STJ94149

GENERAL INFORMATION

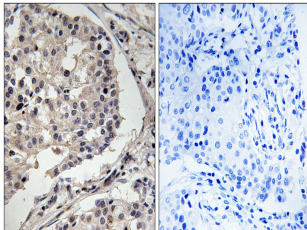
Product Type	Primary antibodies
Short Description	Rabbit polyclonal antibody anti-Mitogen-activated protein kinase kinase kinase 9 and Mitogen-activated protein kinase kinase kinase 10 (250-330) is suitable for use in Immunohistochemistry, Immunofluorescence and ELISA research applications.
Applications	IHC-P, IF-P, ELISA
Host/Source	Rabbit
Reactivity	Human, Mouse

PRODUCT PROPERTIES

Clonality	Polyclonal
Clone ID	
Concentration	1 mg/mL
Conjugation	Unconjugated
Purification	The antibody was affinity-purified from rabbit anti-serum by affinity-chromatography.
Dilution	IHC 1:100-1:300
Range	ELISA 1:5000
Formulation	PBS, 50% Glycerol, 0.5% BSA and 0.02% Sodium Azide.
Isotype	IgG
Storage	Store at -20°C for up to 1 year from the date of receipt, and avoid repeat freeze-thaw cycles.
Instruction	

TARGET INFORMATION

Gene ID	4293 4294
Gene Symbol	MAP3K9 MAP3K10
Uniprot ID	M3K9_HUMAN M3K10_HUMAN
Immunogen	The antiserum was produced against synthesized peptide derived from human MLK1/2 at amino acid range 281-330
Immunogen Region	250-330
Specificity	MLK1/2 polyclonal antibody (Mitogen-activated protein kinase kinase kinase 9 and Mitogen-activated protein kinase kinase kinase 10) binds to endogenous Mitogen-activated protein kinase kinase kinase 9 and Mitogen-activated protein kinase kinase 10
Immunogen Sequence	



Immunohistochemistry analysis of paraffin-embedded human breast carcinoma tissue, using MLK1/2 Antibody. The picture on the right is blocked with the synthesized peptide.

This product is suitable for in-vitro studies under the RESEARCH USE ONLY [RUO] licence. This product must not be used as for diagnostic or other medical purposes.
St John's Laboratory Ltd, Knowledge Dock Business Centre, University Way, London, E16 2RD | Tel: 0208 223 3081