

Anti-MAP3K9 antibody (530-610 Internal) (STJ94148)

STJ94148

GENERAL INFORMATION

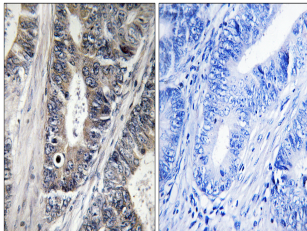
Product Type	Primary antibodies
Short Description	Rabbit polyclonal antibody anti-Mitogen-Activated Protein Kinase Kinase Kinase 9 (530-610 Internal) is suitable for use in Immunohistochemistry, Immunofluorescence and ELISA research applications.
Applications	IHC-P, IF-P, ELISA
Host/Source	Rabbit
Reactivity	Human, Mouse

PRODUCT PROPERTIES

Clonality	Polyclonal
Clone ID	
Concentration	1 mg/mL
Conjugation	Unconjugated
Purification	The antibody was affinity-purified from rabbit anti-serum by affinity-chromatography.
Dilution	IHC 1:100-1:300
Range	ELISA 1:20000
Formulation	PBS, 50% Glycerol, 0.5% BSA and 0.02% Sodium Azide.
Isotype	IgG
Storage	Store at -20°C for up to 1 year from the date of receipt, and avoid repeat freeze-thaw cycles.
Instruction	

TARGET INFORMATION

Gene ID	4293
Gene Symbol	MAP3K9
Uniprot ID	M3K9_HUMAN
Immunogen	The antiserum was produced against synthesized peptide derived from human MAP3K9 at amino acid range 561-610
Immunogen Region	530-610 Internal
Specificity	MAP3K9 polyclonal antibody (Mitogen-Activated Protein Kinase Kinase Kinase 9) binds to endogenous Mitogen-Activated Protein Kinase Kinase Kinase 9 at the amino acid region 530-610 Internal.
Immunogen Sequence	



Immunohistochemistry analysis of paraffin-embedded human colon carcinoma tissue using MAP3K9 Antibody. The picture on the right is blocked with the synthesized peptide.