

## Anti-MLH1 antibody (410-490 Internal) (STJ94145)

STJ94145

### GENERAL INFORMATION

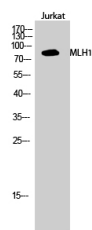
<b>Product Type</b>	Primary antibodies
<b>Short Description</b>	Rabbit polyclonal antibody anti-Dna Mismatch Repair Protein Mlh1 (410-490 Internal) is suitable for use in Western Blot, Immunofluorescence, Immunocytochemistry and ELISA research applications.
<b>Applications</b>	WB, IF, ICC, ELISA
<b>Host/Source</b>	Rabbit
<b>Reactivity</b>	Human, Mouse, Rat

### PRODUCT PROPERTIES

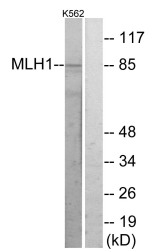
<b>Clonality</b>	Polyclonal
<b>Clone ID</b>	
<b>Concentration</b>	1 mg/mL
<b>Conjugation</b>	Unconjugated
<b>Purification</b>	The antibody was affinity-purified from rabbit anti-serum by affinity-chromatography.
<b>Dilution Range</b>	WB 1:500-1:2000 IF 1:200-1:1000 ELISA 1:20000
<b>Formulation</b>	PBS, 50% Glycerol, 0.5% BSA and 0.02% Sodium Azide.
<b>Isotype</b>	IgG
<b>Storage Instruction</b>	Store at -20°C for up to 1 year from the date of receipt, and avoid repeat freeze-thaw cycles.

### TARGET INFORMATION

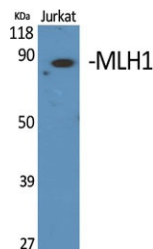
<b>Gene ID</b>	4292
<b>Gene Symbol</b>	MLH1
<b>Uniprot ID</b>	MLH1_HUMAN
<b>Immunogen</b>	The antiserum was produced against synthesized peptide derived from human MLH1 at amino acid range 441-490
<b>Immunogen Region</b>	410-490 Internal
<b>Specificity</b>	MLH1 polyclonal antibody (Dna Mismatch Repair Protein Mlh1) binds to endogenous Dna Mismatch Repair Protein Mlh1 at the amino acid region 410-490 Internal.
<b>Immunogen Sequence</b>	



Western blot analysis of Jurkat cells using MLH1 Polyclonal Antibody cells nucleus extracted by Minute™ Cytoplasmic and Nuclear Fractionation kit (SC-003, Inventiotech, MN, USA).



Western blot analysis of lysates from K562 cells, using MLH1 Antibody. The lane on the right is blocked with the synthesized peptide.



Western blot analysis of various cells using MLH1 Polyclonal Antibody cells nucleus extracted by Minute™ Cytoplasmic and Nuclear Fractionation kit (SC-003, Inventiotech, MN, USA).

This product is suitable for in-vitro studies under the RESEARCH USE ONLY [RUO] licence. This product must not be used as for diagnostic or other medical purposes.  
St John's Laboratory Ltd, Knowledge Dock Business Centre, University Way, London, E16 2RD | Tel: 0208 223 3081