

## Anti-DUSP9 antibody (120-200 Internal) (STJ94140)

STJ94140

### GENERAL INFORMATION

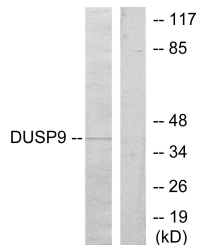
<b>Product Type</b>	Primary antibodies
<b>Short Description</b>	Rabbit polyclonal antibody anti-Dual Specificity Protein Phosphatase 9 (120-200 Internal) is suitable for use in Western Blot, Immunohistochemistry, Immunofluorescence, Immunocytochemistry and ELISA research applications.
<b>Applications</b>	WB, IHC-P, IF, ICC, ELISA
<b>Host/Source</b>	Rabbit
<b>Reactivity</b>	Human, Mouse, Rat

### PRODUCT PROPERTIES

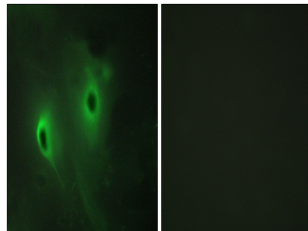
<b>Clonality</b>	Polyclonal
<b>Clone ID</b>	
<b>Concentration</b>	1 mg/mL
<b>Conjugation</b>	Unconjugated
<b>Purification</b>	The antibody was affinity-purified from rabbit anti-serum by affinity-chromatography.
<b>Dilution Range</b>	WB 1:500-1:2000 IHC 1:100-1:300 IF 1:200-1:1000 ELISA 1:20000
<b>Formulation</b>	PBS, 50% Glycerol, 0.5% BSA and 0.02% Sodium Azide.
<b>Isotype</b>	IgG
<b>Storage Instruction</b>	Store at -20°C for up to 1 year from the date of receipt, and avoid repeat freeze-thaw cycles.

### TARGET INFORMATION

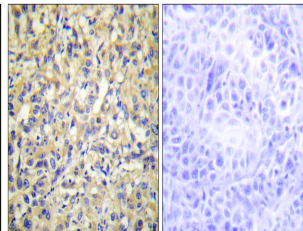
<b>Gene ID</b>	1852
<b>Gene Symbol</b>	DUSP9
<b>Uniprot ID</b>	DUS9_HUMAN
<b>Immunogen</b>	The antiserum was produced against synthesized peptide derived from human DUSP9 at amino acid range 151-200
<b>Immunogen Region</b>	120-200 Internal
<b>Specificity</b>	DUSP9 polyclonal antibody (Dual Specificity Protein Phosphatase 9) binds to endogenous Dual Specificity Protein Phosphatase 9 at the amino acid region 120-200 Internal.
<b>Immunogen Sequence</b>	



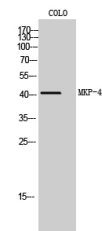
Western blot analysis of lysates from HeLa cells, using DUSP9 Antibody. The lane on the right is blocked with the synthesized peptide.



Immunofluorescence analysis of HeLa cells, using DUSP9 Antibody. The picture on the right is blocked with the synthesized peptide.



Immunohistochemistry analysis of paraffin-embedded human liver carcinoma tissue, using DUSP9 Antibody. The picture on the right is blocked with the synthesized peptide.



Western blot analysis of COLO cells using MKP-4 Polyclonal Antibody diluted at 1: 1000

This product is suitable for in-vitro studies under the RESEARCH USE ONLY [RUO] licence. This product must not be used as for diagnostic or other medical purposes.  
St John's Laboratory Ltd, Knowledge Dock Business Centre, University Way, London, E16 2RD | Tel: 0208 223 3081