

Anti-MINPP1 antibody (300-380 Internal) (STJ94132)

STJ94132

GENERAL INFORMATION

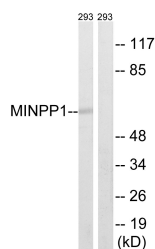
Product Type	Primary antibodies
Short Description	Rabbit polyclonal antibody anti-Multiple Inositol Polyphosphate Phosphatase 1 (300-380 Internal) is suitable for use in Western Blot, Immunohistochemistry, Immunofluorescence and ELISA research applications.
Applications	WB, IHC-P, IF-P, ELISA
Host/Source	Rabbit
Reactivity	Human, Mouse, Rat

PRODUCT PROPERTIES

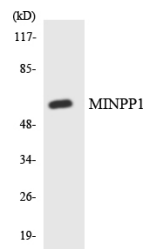
Clonality	Polyclonal
Clone ID	
Concentration	1 mg/mL
Conjugation	Unconjugated
Purification	The antibody was affinity-purified from rabbit anti-serum by affinity-chromatography.
Dilution	WB 1:500-1:2000
Range	IHC 1:100-1:300 ELISA 1:10000
Formulation	PBS, 50% Glycerol, 0.5% BSA and 0.02% Sodium Azide.
Isotype	IgG
Storage Instruction	Store at -20°C for up to 1 year from the date of receipt, and avoid repeat freeze-thaw cycles.

TARGET INFORMATION

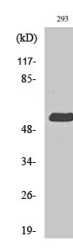
Gene ID	9562
Gene Symbol	MINPP1
Uniprot ID	MINP1_HUMAN
Immunogen	The antiserum was produced against synthesized peptide derived from human MINPP1 at amino acid range 328-377
Immunogen Region	300-380 Internal
Specificity	MINPP1 polyclonal antibody (Multiple Inositol Polyphosphate Phosphatase 1) binds to endogenous Multiple Inositol Polyphosphate Phosphatase 1 at the amino acid region 300-380 Internal.
Immunogen Sequence	



Western blot analysis of lysates from 293 cells, using MINPP1 Antibody. The lane on the right is blocked with the synthesized peptide.



Western blot analysis of the lysates from HepG2 cells using MINPP1 antibody.



Western blot analysis of various cells using MIPP Polyclonal Antibody.