

Anti-SPON2 antibody (40-120 Internal) (STJ94128)

STJ94128

GENERAL INFORMATION

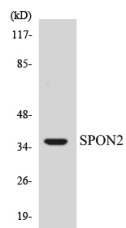
Product Type	Primary antibodies
Short Description	Rabbit polyclonal antibody anti-Spondin-2 (40-120 Internal) is suitable for use in Western Blot and ELISA research applications.
Applications	WB, ELISA
Host/Source	Rabbit
Reactivity	Human, Mouse, Rat, Monkey

PRODUCT PROPERTIES

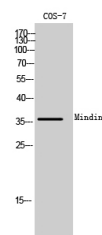
Clonality	Polyclonal
Clone ID	
Concentration	1 mg/mL
Conjugation	Unconjugated
Purification	The antibody was affinity-purified from rabbit anti-serum by affinity-chromatography.
Dilution Range	WB 1:500-1:2000 ELISA 1:40000
Formulation	PBS, 50% Glycerol, 0.5% BSA and 0.02% Sodium Azide.
Isotype	IgG
Storage Instruction	Store at -20°C for up to 1 year from the date of receipt, and avoid repeat freeze-thaw cycles.

TARGET INFORMATION

Gene ID	10417
Gene Symbol	SPON2
Uniprot ID	SPON2_HUMAN
Immunogen	The antiserum was produced against synthesized peptide derived from human SPON2 at amino acid range 71-120
Immunogen Region	40-120 Internal
Specificity	SPON2 polyclonal antibody (Spondin-2) binds to endogenous Spondin-2 at the amino acid region 40-120 Internal.
Immunogen Sequence	



Western blot analysis of the lysates from HUVEC cells using SPON2 antibody.



Western blot analysis of COS-7 cells using Mindin Polyclonal Antibody

This product is suitable for in-vitro studies under the RESEARCH USE ONLY [RUO] licence. This product must not be used as for diagnostic or other medical purposes.
St John's Laboratory Ltd, Knowledge Dock Business Centre, University Way, London, E16 2RD | Tel: 0208 223 3081