

Anti-MIA antibody (60-140 C-Term) (STJ94120)

STJ94120

GENERAL INFORMATION

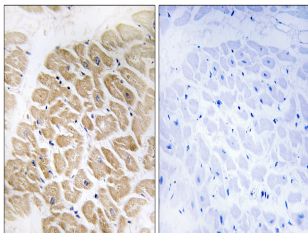
| | |
|--------------------------|---|
| Product Type | Primary antibodies |
| Short Description | Rabbit polyclonal antibody anti-Melanoma-Derived Growth Regulatory Protein (60-140 C-Term) is suitable for use in Immunohistochemistry, Immunofluorescence and ELISA research applications. |
| Applications | IHC-P, IF-P, ELISA |
| Host/Source | Rabbit |
| Reactivity | Human, Mouse, Rat |

PRODUCT PROPERTIES

| | |
|-----------------------|--|
| Clonality | Polyclonal |
| Clone ID | |
| Concentration | 1 mg/mL |
| Conjugation | Unconjugated |
| Purification | The antibody was affinity-purified from rabbit anti-serum by affinity-chromatography. |
| Dilution Range | IHC 1:100-1:300 ELISA 1:40000 |
| Formulation | PBS, 50% Glycerol, 0.5% BSA and 0.02% Sodium Azide. |
| Isotype | IgG |
| Storage | Store at -20°C for up to 1 year from the date of receipt, and avoid repeat freeze-thaw cycles. |
| Instruction | |

TARGET INFORMATION

| | |
|---------------------------|---|
| Gene ID | 8190 |
| Gene Symbol | MIA |
| Uniprot ID | MIA_HUMAN |
| Immunogen | The antiserum was produced against synthesized peptide derived from human MIA at amino acid range 82-131 |
| Immunogen Region | 60-140 C-Term |
| Specificity | MIA polyclonal antibody (Melanoma-Derived Growth Regulatory Protein) binds to endogenous Melanoma-Derived Growth Regulatory Protein at the amino acid region 60-140 C-Term. |
| Immunogen Sequence | |



Immunohistochemistry analysis of paraffin-embedded human heart tissue, using MIA Antibody. The picture on the right is blocked with the synthesized peptide.