

Anti-CHD4 antibody (540-620 Internal) (STJ94119)

STJ94119

GENERAL INFORMATION

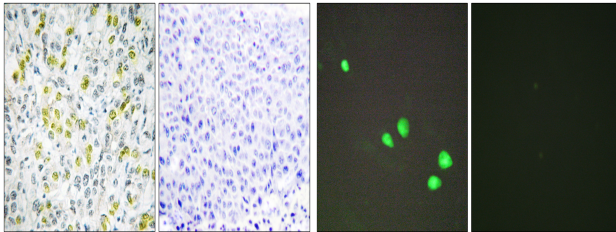
Product Type	Primary antibodies
Short Description	Rabbit polyclonal antibody anti-Chromodomain-Helicase-Dna-Binding Protein 4 (540-620 Internal) is suitable for use in Immunohistochemistry, Immunofluorescence, Immunocytochemistry and ELISA research applications.
Applications	IHC-P, IF, ICC, ELISA
Host/Source	Rabbit
Reactivity	Human, Mouse

PRODUCT PROPERTIES

Clonality	Polyclonal
Clone ID	
Concentration	1 mg/mL
Conjugation	Unconjugated
Purification	The antibody was affinity-purified from rabbit anti-serum by affinity-chromatography.
Dilution Range	IHC 1:100-1:300 IF 1:200-1:1000 ELISA 1:20000
Formulation	PBS, 50% Glycerol, 0.5% BSA and 0.02% Sodium Azide.
Isotype	IgG
Storage Instruction	Store at -20°C for up to 1 year from the date of receipt, and avoid repeat freeze-thaw cycles.

TARGET INFORMATION

Gene ID	1108
Gene Symbol	CHD4
Uniprot ID	CHD4_HUMAN
Immunogen	The antiserum was produced against synthesized peptide derived from human CHD4 at amino acid range 571-620
Immunogen Region	540-620 Internal
Specificity	CHD4 polyclonal antibody (Chromodomain-Helicase-Dna-Binding Protein 4) binds to endogenous Chromodomain-Helicase-Dna-Binding Protein 4 at the amino acid region 540-620 Internal.
Immunogen Sequence	



Immunohistochemistry analysis of paraffin-embedded human liver carcinoma tissue, using CHD4 Antibody. The picture on the right is blocked with the synthesized peptide.

Immunofluorescence analysis of HepG2 cells, using CHD4 Antibody. The picture on the right is blocked with the synthesized peptide.

This product is suitable for in-vitro studies under the RESEARCH USE ONLY [RUO] licence. This product must not be used as for diagnostic or other medical purposes.
St John's Laboratory Ltd, Knowledge Dock Business Centre, University Way, London, E16 2RD | Tel: 0208 223 3081