

## Anti-GRM7 antibody (320-400 Internal) (STJ94113)

STJ94113

### GENERAL INFORMATION

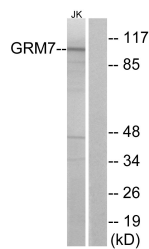
<b>Product Type</b>	Primary antibodies
<b>Short Description</b>	Rabbit polyclonal antibody anti-Metabotropic Glutamate Receptor 7 (320-400 Internal) is suitable for use in Western Blot, Immunofluorescence, Immunocytochemistry and ELISA research applications.
<b>Applications</b>	WB, IF, ICC, ELISA
<b>Host/Source</b>	Rabbit
<b>Reactivity</b>	Human, Mouse, Rat

### PRODUCT PROPERTIES

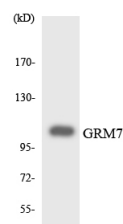
<b>Clonality</b>	Polyclonal
<b>Clone ID</b>	
<b>Concentration</b>	1 mg/mL
<b>Conjugation</b>	Unconjugated
<b>Purification</b>	The antibody was affinity-purified from rabbit anti-serum by affinity-chromatography.
<b>Dilution Range</b>	WB 1:500-1:2000 IF 1:200-1:1000 ELISA 1:40000
<b>Formulation</b>	PBS, 50% Glycerol, 0.5% BSA and 0.02% Sodium Azide.
<b>Isotype</b>	IgG
<b>Storage Instruction</b>	Store at 20°C for up to 1 year from the date of receipt, and avoid repeat freeze-thaw cycles.

### TARGET INFORMATION

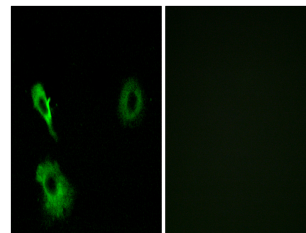
<b>Gene ID</b>	2917
<b>Gene Symbol</b>	GRM7
<b>Uniprot ID</b>	GRM7_HUMAN
<b>Immunogen Region</b>	The antiserum was produced against synthesized peptide derived from human GRM7 at amino acid range 351-400
<b>Immunogen Region</b>	320-400 Internal
<b>Specificity</b>	GRM7 polyclonal antibody (Metabotropic Glutamate Receptor 7) binds to endogenous Metabotropic Glutamate Receptor 7 at the amino acid region 320-400 Internal.
<b>Immunogen Sequence</b>	



Western blot analysis of lysates from Jurkat cells, using GRM7 Antibody. The lane on the right is blocked with the synthesized peptide.



Western blot analysis of the lysates from HUVEC cells using GRM7 antibody.



Immunofluorescence analysis of A549 cells, using GRM7 Antibody. The picture on the right is blocked with the synthesized peptide.

This product is suitable for in-vitro studies under the RESEARCH USE ONLY [RUO] licence. This product must not be used as for diagnostic or other medical purposes.  
St John's Laboratory Ltd, Knowledge Dock Business Centre, University Way, London, E16 2RD | Tel: 0208 223 3081