

Anti-GRM4 antibody (820-900 C-Term) (STJ94109)

STJ94109

GENERAL INFORMATION

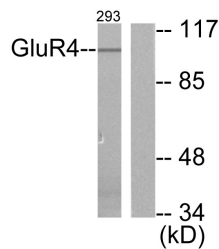
Product Type	Primary antibodies
Short Description	Rabbit polyclonal antibody anti-Metabotropic Glutamate Receptor 4 (820-900 C-Term) is suitable for use in Western Blot, Immunohistochemistry, Immunofluorescence and ELISA research applications.
Applications	WB, IHC-P, IF-P, ELISA
Host/Source	Rabbit
Reactivity	Human, Mouse, Rat

PRODUCT PROPERTIES

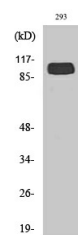
Clonality	Polyclonal
Clone ID	
Concentration	1 mg/mL
Conjugation	Unconjugated
Purification	The antibody was affinity-purified from rabbit anti-serum by affinity-chromatography.
Dilution Range	WB 1:500-1:2000 IHC 1:100-1:300 ELISA 1:10000
Formulation	PBS, 50% Glycerol, 0.5% BSA and 0.02% Sodium Azide.
Isotype	IgG
Storage Instruction	Store at -20°C for up to 1 year from the date of receipt, and avoid repeat freeze-thaw cycles.

TARGET INFORMATION

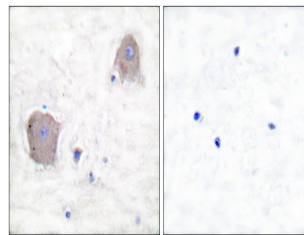
Gene ID	2914
Gene Symbol	GRM4
Uniprot ID	GRM4_HUMAN
Immunogen	The antiserum was produced against synthesized peptide derived from human mGluR4 at amino acid range 851-900
Immunogen Region	820-900 C-Term
Specificity	GRM4 polyclonal antibody (Metabotropic Glutamate Receptor 4) binds to endogenous Metabotropic Glutamate Receptor 4 at the amino acid region 820-900 C-Term.
Immunogen Sequence	



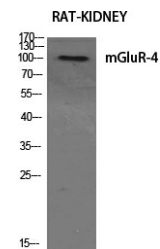
Western blot analysis of lysates from 293 cells, treated with Forskolin 40nM 30', using mGluR4 Antibody. The lane on the right is blocked with the synthesized peptide.



Western blot analysis of 293 cells using mGluR-4 Polyclonal Antibody diluted at 1: 500



Immunohistochemistry analysis of paraffin-embedded human brain tissue, using mGluR4 Antibody. The picture on the right is blocked with the synthesized peptide.



Western blot analysis of various cells using mGluR-4 Polyclonal Antibody diluted at 1: 500

This product is suitable for in-vitro studies under the RESEARCH USE ONLY [RUO] licence. This product must not be used as for diagnostic or other medical purposes.
St John's Laboratory Ltd, Knowledge Dock Business Centre, University Way, London, E16 2RD | Tel: 0208 223 3081