

Anti-mGluR-2/3 antibody (800-880 C-Term) (STJ94108)

STJ94108

GENERAL INFORMATION

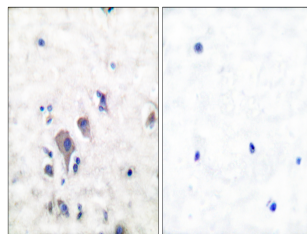
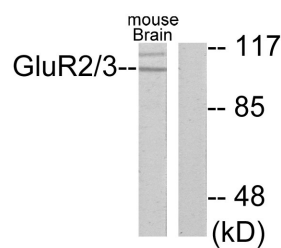
Product Type	Primary antibodies
Short Description	Rabbit polyclonal antibody anti-Metabotropic glutamate receptor 2 and Metabotropic glutamate receptor 3 (800-880 C-Term) is suitable for use in Western Blot, Immunohistochemistry, Immunofluorescence and ELISA research applications.
Applications	WB, IHC-P, IF-P, ELISA
Host/Source	Rabbit
Reactivity	Human, Mouse, Rat

PRODUCT PROPERTIES

Clonality	Polyclonal
Clone ID	
Concentration	1 mg/mL
Conjugation	Unconjugated
Purification	The antibody was affinity-purified from rabbit anti-serum by affinity-chromatography.
Dilution Range	WB 1:500-1:2000 IHC 1:100-1:300 ELISA 1:20000
Formulation	PBS, 50% Glycerol, 0.5% BSA and 0.02% Sodium Azide.
Isotype	IgG
Storage Instruction	Store at -20°C for up to 1 year from the date of receipt, and avoid repeat freeze-thaw cycles.

TARGET INFORMATION

Gene ID	2912 2913
Gene Symbol	GRM2 GRM3
Uniprot ID	GRM2_HUMAN GRM3_HUMAN
Immunogen	The antiserum was produced against synthesized peptide derived from human mGluR2/3 at amino acid range 823-872
Immunogen Region	800-880 C-Term
Specificity	mGluR-2/3 polyclonal antibody (Metabotropic glutamate receptor 2 and Metabotropic glutamate receptor 3) binds to endogenous Metabotropic glutamate receptor 2 and Metabotropic glutamate receptor 3 at the amino acid region 800-880 C-Term.
Immunogen Sequence	



This product is suitable for in-vitro studies under the RESEARCH USE ONLY [RUO] licence. This product must not be used as for diagnostic or other medical purposes.
St John's Laboratory Ltd, Knowledge Dock Business Centre, University Way, London, E16 2RD | Tel: 0208 223 3081