

Anti-ENAH antibody (450-530 C-Term) (STJ94096)

STJ94096

GENERAL INFORMATION

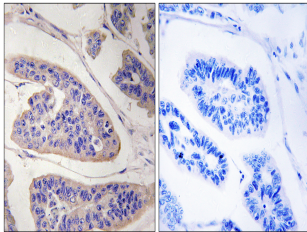
Product Type	Primary antibodies
Short Description	Rabbit polyclonal antibody anti-Protein Enabled Homolog (450-530 C-Term) is suitable for use in Western Blot, Immunohistochemistry, Immunofluorescence and ELISA research applications.
Applications	WB, IHC-P, IF-P, ELISA
Host/Source	Rabbit
Reactivity	Human, Mouse, Rat

PRODUCT PROPERTIES

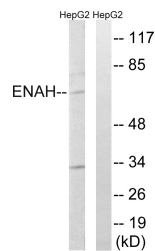
Clonality	Polyclonal
Clone ID	
Concentration	1 mg/mL
Conjugation	Unconjugated
Purification	The antibody was affinity-purified from rabbit anti-serum by affinity-chromatography.
Dilution Range	WB 1:500-1:2000 IHC 1:100-1:300 ELISA 1:10000
Formulation	PBS, 50% Glycerol, 0.5% BSA and 0.02% Sodium Azide.
Isotype	IgG
Storage Instruction	Store at -20°C for up to 1 year from the date of receipt, and avoid repeat freeze-thaw cycles.

TARGET INFORMATION

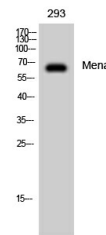
Gene ID	55740
Gene Symbol	ENAH
Uniprot ID	ENAH_HUMAN
Immunogen	The antiserum was produced against synthesized peptide derived from human ENAH at amino acid range 472-521
Immunogen Region	450-530 C-Term
Specificity	ENAH polyclonal antibody (Protein Enabled Homolog) binds to endogenous Protein Enabled Homolog at the amino acid region 450-530 C-Term.
Immunogen Sequence	



Immunohistochemistry analysis of paraffin-embedded human breast carcinoma tissue, using ENAH Antibody. The picture on the right is blocked with the synthesized peptide.



Western blot analysis of lysates from HepG2 cells, using ENAH Antibody. The lane on the right is blocked with the synthesized peptide.



Western blot analysis of 293 cells using Mena Polyclonal Antibody diluted at 1: 2000