

Anti-MTNR1B antibody (270-350 C-Term) (STJ94092)

STJ94092

GENERAL INFORMATION

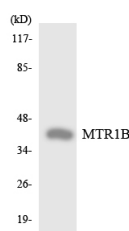
Product Type	Primary antibodies
Short Description	Rabbit polyclonal antibody anti-Melatonin Receptor Type 1b (270-350 C-Term) is suitable for use in Western Blot and ELISA research applications.
Applications	WB, ELISA
Host/Source	Rabbit
Reactivity	Human, Rat, Mouse

PRODUCT PROPERTIES

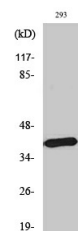
Clonality	Polyclonal
Clone ID	
Concentration	1 mg/mL
Conjugation	Unconjugated
Purification	The antibody was affinity-purified from rabbit anti-serum by affinity-chromatography.
Dilution Range	WB 1:500-1:2000 ELISA 1:5000
Formulation	PBS, 50% Glycerol, 0.5% BSA and 0.02% Sodium Azide.
Isotype	IgG
Storage	Store at -20°C for up to 1 year from the date of receipt, and avoid repeat freeze-thaw cycles.
Instruction	

TARGET INFORMATION

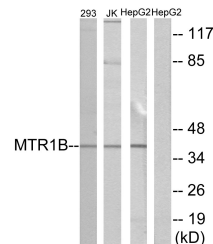
Gene ID	4544
Gene Symbol	MTNR1B
Uniprot ID	MTR1B_HUMAN
Immunogen	The antiserum was produced against synthesized peptide derived from human MTR1B at amino acid range 301-350
Immunogen Region	270-350 C-Term
Specificity	MTNR1B polyclonal antibody (Melatonin Receptor Type 1b) binds to endogenous Melatonin Receptor Type 1b at the amino acid region 270-350 C-Term.
Immunogen Sequence	



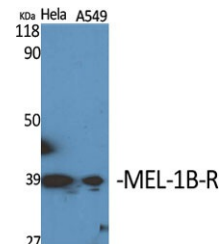
Western blot analysis of the lysates from HeLa cells using MTR1B antibody.



Western blot analysis of HepG2 cells using MEL-1B-R Polyclonal Antibody diluted at 1: 1000



Western blot analysis of lysates from 293, Jurkat, and HepG2 cells, using MTR1B Antibody. The lane on the right is blocked with the synthesized peptide.



Western blot analysis of various cells using MEL-1B-R Polyclonal Antibody diluted at 1: 1000

This product is suitable for in-vitro studies under the RESEARCH USE ONLY [RUO] licence. This product must not be used as for diagnostic or other medical purposes.
St John's Laboratory Ltd, Knowledge Dock Business Centre, University Way, London, E16 2RD | Tel: 0208 223 3081