

Anti-MTNR1A antibody (160-240 Internal) (STJ94091)

STJ94091

GENERAL INFORMATION

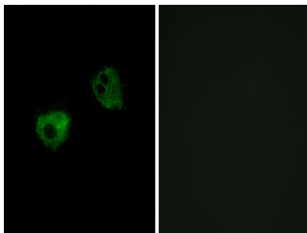
Product Type	Primary antibodies
Short Description	Rabbit polyclonal antibody anti-Melatonin Receptor Type 1a (160-240 Internal) is suitable for use in Immunofluorescence, Immunocytochemistry and ELISA research applications.
Applications	IF, ICC, ELISA
Host/Source	Rabbit
Reactivity	Human, Mouse, Rat

PRODUCT PROPERTIES

Clonality	Polyclonal
Clone ID	
Concentration	1 mg/mL
Conjugation	Unconjugated
Purification	The antibody was affinity-purified from rabbit anti-serum by affinity-chromatography.
Dilution Range	IF 1:200-1:1000 ELISA 1:5000
Formulation	PBS, 50% Glycerol, 0.5% BSA and 0.02% Sodium Azide.
Isotype	IgG
Storage	Store at -20°C for up to 1 year from the date of receipt, and avoid repeat freeze-thaw cycles.
Instruction	

TARGET INFORMATION

Gene ID	4543
Gene Symbol	MTNR1A
Uniprot ID	MTR1A_HUMAN
Immunogen	The antiserum was produced against synthesized peptide derived from human MTR1A at amino acid range 191-240
Immunogen Region	160-240 Internal
Specificity	MTNR1A polyclonal antibody (Melatonin Receptor Type 1a) binds to endogenous Melatonin Receptor Type 1a at the amino acid region 160-240 Internal.
Immunogen Sequence	



Immunofluorescence analysis of HepG2 cells, using MTR1A Antibody. The picture on the right is blocked with the synthesized peptide.