

Anti-MAP2K7 antibody (210-290) (STJ94090)

STJ94090

GENERAL INFORMATION

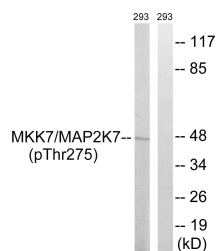
Product Type	Primary antibodies
Short Description	Rabbit polyclonal antibody anti-Dual Specificity Mitogen-Activated Protein Kinase Kinase 7 (210-290) is suitable for use in Western Blot and ELISA research applications.
Applications	WB, ELISA
Host/Source	Rabbit
Reactivity	Human, Mouse, Rat

PRODUCT PROPERTIES

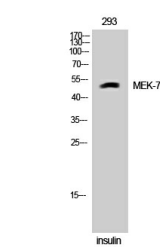
Clonality	Polyclonal
Clone ID	
Concentration	1 mg/mL
Conjugation	Unconjugated
Purification	The antibody was affinity-purified from rabbit anti-serum by affinity-chromatography.
Dilution	WB 1:500-1:2000
Range	ELISA 1:20000
Formulation	PBS, 50% Glycerol, 0.5% BSA and 0.02% Sodium Azide.
Isotype	IgG
Storage	Store at -20°C for up to 1 year from the date of receipt, and avoid repeat freeze-thaw cycles.
Instruction	

TARGET INFORMATION

Gene ID	5609
Gene Symbol	MAP2K7
Uniprot ID	MP2K7_HUMAN
Immunogen	The antiserum was produced against synthesized peptide derived from human MAP2K7 at amino acid range 241-290
Immunogen Region	210-290
Specificity	MAP2K7 polyclonal antibody (Dual Specificity Mitogen-Activated Protein Kinase Kinase 7) binds to endogenous Dual Specificity Mitogen-Activated Protein Kinase Kinase 7 at the amino acid region 210-290.
Immunogen Sequence	



Western blot analysis of lysates from 293 cells treated with insulin 0.01U/ml 15', using MAP2K7 Antibody. The lane on the right is blocked with the synthesized peptide.



Western blot analysis of 293 cells using MEK-7 Polyclonal Antibody