

Anti-MAP2K6 antibody (150-230) (STJ94088)

STJ94088

GENERAL INFORMATION

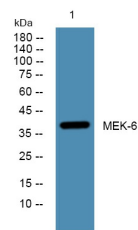
Product Type	Primary antibodies
Short Description	Rabbit polyclonal antibody anti-Dual Specificity Mitogen-Activated Protein Kinase Kinase 6 (150-230) is suitable for use in Western Blot, Immunohistochemistry, Immunofluorescence and ELISA research applications.
Applications	WB, IHC-P, IF-P, ELISA
Host/Source	Rabbit
Reactivity	Human, Mouse, Rat

PRODUCT PROPERTIES

Clonality	Polyclonal
Clone ID	
Concentration	1 mg/mL
Conjugation	Unconjugated
Purification	The antibody was affinity-purified from rabbit anti-serum by affinity-chromatography.
Dilution Range	WB 1:500-1:2000 IHC 1:100-1:300 ELISA 1:5000
Formulation	PBS, 50% Glycerol, 0.5% BSA and 0.02% Sodium Azide.
Isotype	IgG
Storage Instruction	Store at -20°C for up to 1 year from the date of receipt, and avoid repeat freeze-thaw cycles.

TARGET INFORMATION

Gene ID	5608
Gene Symbol	MAP2K6
Uniprot ID	MP2K6_HUMAN
Immunogen Region	Synthesized peptide derived from MEK-6. at amino acid range: 150-230
Specificity	MAP2K6 polyclonal antibody (Dual Specificity Mitogen-Activated Protein Kinase Kinase 6) binds to endogenous Dual Specificity Mitogen-Activated Protein Kinase Kinase 6 at the amino acid region 150-230.
Immunogen Sequence	



This product is suitable for in-vitro studies under the RESEARCH USE ONLY [RUO] licence. This product must not be used as for diagnostic or other medical purposes.
 St John's Laboratory Ltd, Knowledge Dock Business Centre, University Way, London, E16 2RD | Tel: 0208 223 3081