

Anti-MAP2K3 antibody (160-240) (STJ94082)

STJ94082

GENERAL INFORMATION

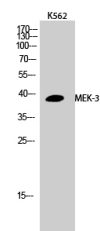
Product Type	Primary antibodies
Short Description	Rabbit polyclonal antibody anti-Dual Specificity Mitogen-Activated Protein Kinase Kinase 3 (160-240) is suitable for use in Western Blot and ELISA research applications.
Applications	WB, ELISA
Host/Source	Rabbit
Reactivity	Human, Mouse, Rat

PRODUCT PROPERTIES

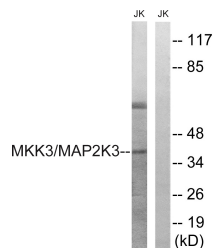
Clonality	Polyclonal
Clone ID	
Concentration	1 mg/mL
Conjugation	Unconjugated
Purification	The antibody was affinity-purified from rabbit anti-serum by affinity-chromatography.
Dilution	WB 1:500-1:2000
Range	ELISA 1:5000
Formulation	PBS, 50% Glycerol, 0.5% BSA and 0.02% Sodium Azide.
Isotype	IgG
Storage	Store at -20°C for up to 1 year from the date of receipt, and avoid repeat freeze-thaw cycles.
Instruction	

TARGET INFORMATION

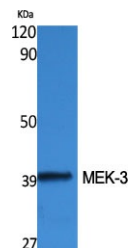
Gene ID	5606
Gene Symbol	MAP2K3
Uniprot ID	MP2K3_HUMAN
Immunogen	The antiserum was produced against synthesized peptide derived from human MAP2K3 at amino acid range 188-237
Immunogen Region	160-240
Specificity	MAP2K3 polyclonal antibody (Dual Specificity Mitogen-Activated Protein Kinase Kinase 3) binds to endogenous Dual Specificity Mitogen-Activated Protein Kinase Kinase 3 at the amino acid region 160-240.
Immunogen Sequence	



Western blot analysis of K562 cells using MEK-3 Polyclonal Antibody



Western blot analysis of lysates from Jurkat cells, treated with serum 20% 15', using MAP2K3 Antibody. The lane on the right is blocked with the synthesized peptide.



Western blot analysis of various cells using MEK-3 Polyclonal Antibody

This product is suitable for in-vitro studies under the RESEARCH USE ONLY [RUO] licence. This product must not be used as for diagnostic or other medical purposes.
 St John's Laboratory Ltd, Knowledge Dock Business Centre, University Way, London, E16 2RD | Tel: 0208 223 3081