

## Anti-MAP2K2 antibody (340-420) (STJ94081)

STJ94081

### GENERAL INFORMATION

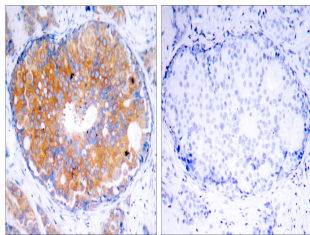
<b>Product Type</b>	Primary antibodies
<b>Short Description</b>	Rabbit polyclonal antibody anti-Dual Specificity Mitogen-Activated Protein Kinase Kinase 2 (340-420) is suitable for use in Western Blot, Immunohistochemistry, Immunofluorescence, Immunoprecipitation and ELISA research applications.
<b>Applications</b>	WB, IHC-P, IF-P, IP, ELISA
<b>Host/Source</b>	Rabbit
<b>Reactivity</b>	Human, Mouse, Rat

### PRODUCT PROPERTIES

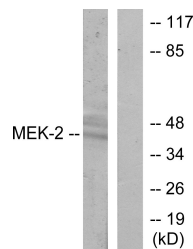
<b>Clonality</b>	Polyclonal
<b>Clone ID</b>	
<b>Concentration</b>	1 mg/mL
<b>Conjugation</b>	Unconjugated
<b>Purification</b>	The antibody was affinity-purified from rabbit anti-serum by affinity-chromatography.
<b>Dilution Range</b>	WB 1:500-1:2000 IHC 1:100-1:300 IP 2-5 ug/mg ELISA 1:10000
<b>Formulation</b>	PBS, 50% Glycerol, 0.5% BSA and 0.02% Sodium Azide.
<b>Isotype</b>	IgG
<b>Storage Instruction</b>	Store at -20°C for up to 1 year from the date of receipt, and avoid repeat freeze-thaw cycles.

### TARGET INFORMATION

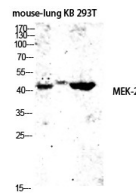
<b>Gene ID</b>	5605
<b>Gene Symbol</b>	MAP2K2
<b>Uniprot ID</b>	MP2K2_HUMAN
<b>Immunogen</b>	The antiserum was produced against synthesized peptide derived from human MAP2K2 at amino acid range 261-310
<b>Immunogen Region</b>	340-420
<b>Specificity</b>	MAP2K2 polyclonal antibody (Dual Specificity Mitogen-Activated Protein Kinase Kinase 2) binds to endogenous Dual Specificity Mitogen-Activated Protein Kinase Kinase 2 at the amino acid region 340-420.
<b>Immunogen Sequence</b>	



Immunohistochemistry analysis of paraffin-embedded human breast carcinoma, using MEK2 Antibody. The picture on the right is blocked with the synthesized peptide.



Western blot analysis of lysates from ovary cancer cells, using MEK2 Antibody. The lane on the right is blocked with the synthesized peptide.



Western blot analysis of mouse-lung KB 293T lysis using MEK-2 antibody. Antibody was diluted at 1:2000

This product is suitable for in-vitro studies under the RESEARCH USE ONLY [RUO] licence. This product must not be used as for diagnostic or other medical purposes.  
St John's Laboratory Ltd, Knowledge Dock Business Centre, University Way, London, E16 2RD | Tel: 0208 223 3081