

Anti-MEK-1/2 antibody (160-240) (STJ94080)

STJ94080

GENERAL INFORMATION

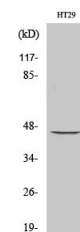
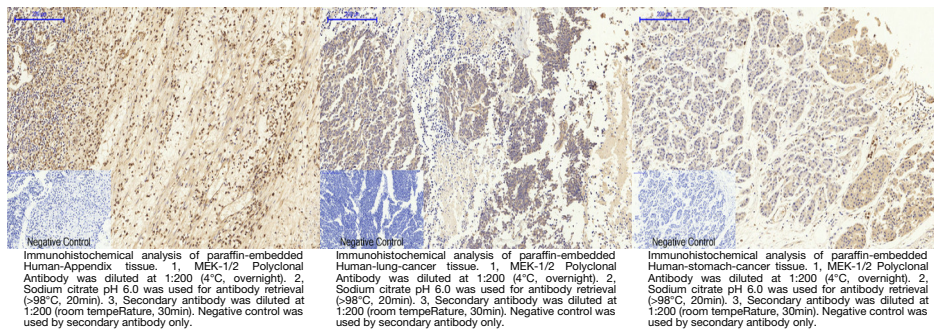
Product Type	Primary antibodies
Short Description	Rabbit polyclonal antibody anti-Dual specificity mitogen-activated protein kinase kinase 1 and Dual specificity mitogen-activated protein kinase kinase 2 (160-240) is suitable for use in Immunofluorescence, Immunocytochemistry, Western Blot, Immunohistochemistry
Applications	IF, ICC, WB, IHC-P, ELISA
Host/Source	Rabbit
Reactivity	Human, Mouse, Rat, Monkey

PRODUCT PROPERTIES

Clonality	Polyclonal
Clone ID	
Concentration	1 mg/mL
Conjugation	Unconjugated
Purification	The antibody was affinity-purified from rabbit anti-serum by affinity-chromatography.
Dilution	IF 1:50-200
Range	WB 1:500-2000 ELISA 1:10000-20000 IHC 1:50-300
Formulation	PBS, 50% Glycerol, 0.5% BSA and 0.02% Sodium Azide.
Isotype	IgG
Storage Instruction	Store at -20°C for up to 1 year from the date of receipt, and avoid repeat freeze-thaw cycles.

TARGET INFORMATION

Gene ID	5605 5604
Gene Symbol	MAP2K2 MAP2K1
Uniprot ID	MP2K2_HUMAN MP2K1_HUMAN
Immunogen	The antiserum was produced against synthesized peptide derived from human MEK1/2 at amino acid range 189-238
Immunogen Region	160-240
Specificity	MEK-1/2 polyclonal antibody (Dual specificity mitogen-activated protein kinase kinase 1 and Dual specificity mitogen-activated protein kinase kinase 2) binds to endogenous Dual specificity mitogen-activated protein kinase kinase 1 and Dual specificity mitogen-activated protein kinase kinase 2
Immunogen Sequence	



Western blot analysis of various cells using MEK-1/2 Polyclonal Antibody diluted at 1: 1000

This product is suitable for in-vitro studies under the RESEARCH USE ONLY [RUO] licence. This product must not be used as for diagnostic or other medical purposes.
St John's Laboratory Ltd, Knowledge Dock Business Centre, University Way, London, E16 2RD | Tel: 0208 223 3081