

Anti-MAP2K1 antibody (240-320) (STJ94077)

STJ94077

GENERAL INFORMATION

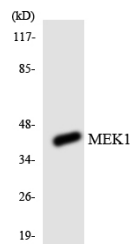
Product Type	Primary antibodies
Short Description	Rabbit polyclonal antibody anti-Dual Specificity Mitogen-Activated Protein Kinase Kinase 1 (240-320) is suitable for use in Western Blot, Immunohistochemistry, Immunofluorescence and ELISA research applications.
Applications	WB, IHC-P, IF-P, ELISA
Host/Source	Rabbit
Reactivity	Human, Mouse, Rat

PRODUCT PROPERTIES

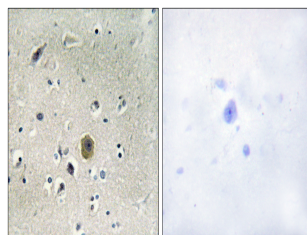
Clonality	Polyclonal
Clone ID	
Concentration	1 mg/mL
Conjugation	Unconjugated
Purification	The antibody was affinity-purified from rabbit anti-serum by affinity-chromatography.
Dilution Range	WB 1:500-1:2000 IHC 1:100-1:300 ELISA 1:5000
Formulation	PBS, 50% Glycerol, 0.5% BSA and 0.02% Sodium Azide.
Isotype	IgG
Storage Instruction	Store at -20°C for up to 1 year from the date of receipt, and avoid repeat freeze-thaw cycles.

TARGET INFORMATION

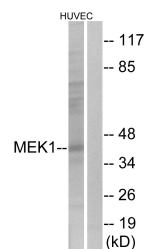
Gene ID	5604
Gene Symbol	MAP2K1
Uniprot ID	MP2K1_HUMAN
Immunogen Region	The antiserum was produced against synthesized peptide derived from human MEK1 at amino acid range 264-313
Immunogen Region	240-320
Specificity	MAP2K1 polyclonal antibody (Dual Specificity Mitogen-Activated Protein Kinase Kinase 1) binds to endogenous Dual Specificity Mitogen-Activated Protein Kinase Kinase 1 at the amino acid region 240-320.
Immunogen Sequence	



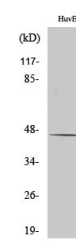
Western blot analysis of the lysates from K562 cells using MEK1 antibody.



Immunohistochemistry analysis of paraffin-embedded human brain tissue, using MEK1 Antibody. The picture on the right is blocked with the synthesized peptide.



Western blot analysis of lysates from HUVEC cells, using MEK1 Antibody. The lane on the right is blocked with the synthesized peptide.



Western blot analysis of various cells using MEK-1 Polyclonal Antibody diluted at 1: 500

This product is suitable for in-vitro studies under the RESEARCH USE ONLY [RUO] licence. This product must not be used as for diagnostic or other medical purposes.
 St John's Laboratory Ltd, Knowledge Dock Business Centre, University Way, London, E16 2RD | Tel: 0208 223 3081