

Anti-MAP3K4 antibody (1250-1330 C-Term) (STJ94074)

STJ94074

GENERAL INFORMATION

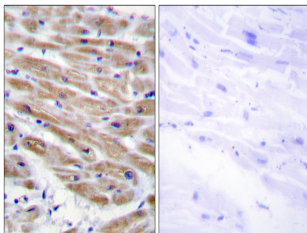
Product Type	Primary antibodies
Short Description	Rabbit polyclonal antibody anti-Mitogen-Activated Protein Kinase Kinase Kinase 4 (1250-1330 C-Term) is suitable for use in Immunohistochemistry, Immunofluorescence and ELISA research applications.
Applications	IHC-P, IF-P, ELISA
Host/Source	Rabbit
Reactivity	Human, Mouse

PRODUCT PROPERTIES

Clonality	Polyclonal
Clone ID	
Concentration	1 mg/mL
Conjugation	Unconjugated
Purification	The antibody was affinity-purified from rabbit anti-serum by affinity-chromatography.
Dilution	IHC 1:100-1:300
Range	ELISA 1:5000
Formulation	PBS, 50% Glycerol, 0.5% BSA and 0.02% Sodium Azide.
Isotype	IgG
Storage	Store at -20°C for up to 1 year from the date of receipt, and avoid repeat freeze-thaw cycles.
Instruction	

TARGET INFORMATION

Gene ID	4216
Gene Symbol	MAP3K4
Uniprot ID	M3K4_HUMAN
Immunogen	The antiserum was produced against synthesized peptide derived from human MAP3K4 at amino acid range 1281-1330
Immunogen Region	1250-1330 C-Term
Specificity	MAP3K4 polyclonal antibody (Mitogen-Activated Protein Kinase Kinase Kinase 4) binds to endogenous Mitogen-Activated Protein Kinase Kinase Kinase 4 at the amino acid region 1250-1330 C-Term.
Immunogen Sequence	



Immunohistochemistry analysis of paraffin-embedded human heart tissue, using MAP3K4 Antibody. The picture on the right is blocked with the synthesized peptide.

This product is suitable for in-vitro studies under the RESEARCH USE ONLY [RUO] licence. This product must not be used as for diagnostic or other medical purposes.
 St John's Laboratory Ltd, Knowledge Dock Business Centre, University Way, London, E16 2RD | Tel: 0208 223 3081