

Anti-MEIS1 antibody (Internal) (STJ94071)

STJ94071

GENERAL INFORMATION

Product Type	Primary antibodies
Short Description	Rabbit polyclonal antibody anti-Homeobox Protein Meis1 (Internal) is suitable for use in Western Blot and ELISA research applications.
Applications	WB, ELISA
Host/Source	Rabbit
Reactivity	Human, Mouse

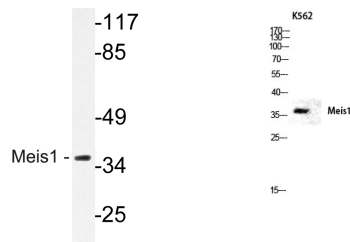
PRODUCT PROPERTIES

Clonality	Polyclonal
Clone ID	
Concentration	1 mg/mL
Conjugation	Unconjugated
Purification	The antibody was affinity-purified from rabbit anti-serum by affinity-chromatography.
Dilution Range	WB 1:500-1:2000 ELISA 1:40000
Formulation	PBS, 50% Glycerol, 0.5% BSA and 0.02% Sodium Azide.
Isotype	IgG
Storage Instruction	Store at -20°C for up to 1 year from the date of receipt, and avoid repeat freeze-thaw cycles.

TARGET INFORMATION

Gene ID	4211
Gene Symbol	MEIS1
Uniprot ID	MEIS1_HUMAN
Immunogen	The antiserum was produced against synthesized peptide derived from human Meis1 at amino acid range 229-278
Immunogen Region	Internal
Specificity	MEIS1 polyclonal antibody (Homeobox Protein Meis1) binds to endogenous Homeobox Protein Meis1 at the amino acid region Internal.

Immunogen Sequence



Western blot analysis of lysate from Jurkat cells, using Meis1 antibody.

Western blot analysis of K562 cells nucleus extracted by Minute TM Cytoplasmic and Nuclear Fractionation kit (SC-003, Inventibiotech, MN, USA).

This product is suitable for in-vitro studies under the RESEARCH USE ONLY [RUO] licence. This product must not be used as for diagnostic or other medical purposes.
St John's Laboratory Ltd, Knowledge Dock Business Centre, University Way, London, E16 2RD | Tel: 0208 223 3081