

## Anti-MEF2A antibody (350-430) (STJ94064)

STJ94064

### GENERAL INFORMATION

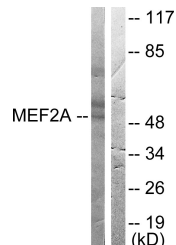
<b>Product Type</b>	Primary antibodies
<b>Short Description</b>	Rabbit polyclonal antibody anti-Myocyte-Specific Enhancer Factor 2a (350-430) is suitable for use in Western Blot, Immunohistochemistry, Immunofluorescence, Immunocytochemistry and ELISA research applications.
<b>Applications</b>	WB, IHC-P, IF, ICC, ELISA
<b>Host/Source</b>	Rabbit
<b>Reactivity</b>	Human, Mouse, Rat

### PRODUCT PROPERTIES

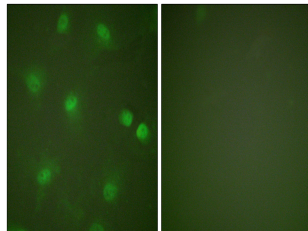
<b>Clonality</b>	Polyclonal
<b>Clone ID</b>	
<b>Concentration</b>	1 mg/mL
<b>Conjugation</b>	Unconjugated
<b>Purification</b>	The antibody was affinity-purified from rabbit anti-serum by affinity-chromatography.
<b>Dilution Range</b>	WB 1:500-1:2000 IHC 1:100-1:300 IF 1:200-1:1000 ELISA 1:40000
<b>Formulation</b>	PBS, 50% Glycerol, 0.5% BSA and 0.02% Sodium Azide.
<b>Isotype</b>	IgG
<b>Storage Instruction</b>	Store at -20°C for up to 1 year from the date of receipt, and avoid repeat freeze-thaw cycles.

### TARGET INFORMATION

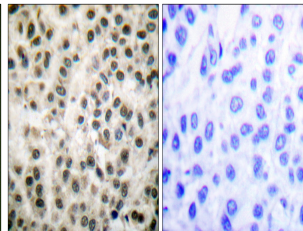
<b>Gene ID</b>	4205
<b>Gene Symbol</b>	MEF2A
<b>Uniprot ID</b>	MEF2A_HUMAN
<b>Immunogen</b>	The antiserum was produced against synthesized peptide derived from human MEF2A at amino acid range 374-423
<b>Immunogen Region</b>	350-430
<b>Specificity</b>	MEF2A polyclonal antibody (Myocyte-Specific Enhancer Factor 2a) binds to endogenous Myocyte-Specific Enhancer Factor 2a at the amino acid region 350-430.
<b>Immunogen Sequence</b>	



Western blot analysis of lysates from HeLa cells, treated with PMA 125ng/ml 30', using MEF2A Antibody. The lane on the right is blocked with the synthesized peptide.



Immunofluorescence analysis of HeLa cells, using MEF2A Antibody. The picture on the right is blocked with the synthesized peptide.



Immunohistochemistry analysis of paraffin-embedded human breast carcinoma tissue, using MEF2A Antibody. The picture on the right is blocked with the synthesized peptide.



Western blot analysis of various cells using MEF-2 Polyclonal Antibody diluted at 1: 1000 cells nucleus extracted by Minute TM Cytoplasmic and Nuclear Fractionation kit (SC-003, Inventibiotec, MN, USA).

This product is suitable for in-vitro studies under the RESEARCH USE ONLY [RUO] licence. This product must not be used as for diagnostic or other medical purposes.  
St John's Laboratory Ltd, Knowledge Dock Business Centre, University Way, London, E16 2RD | Tel: 0208 223 3081