

Anti-MEF2A antibody (250-330) (STJ94063)

STJ94063

GENERAL INFORMATION

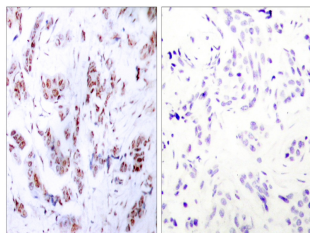
Product Type	Primary antibodies
Short Description	Rabbit polyclonal antibody anti-Myocyte-Specific Enhancer Factor 2a (250-330) is suitable for use in Western Blot, Immunohistochemistry, Immunofluorescence and ELISA research applications.
Applications	WB, IHC-P, IF-P, ELISA
Host/Source	Rabbit
Reactivity	Human, Mouse, Rat

PRODUCT PROPERTIES

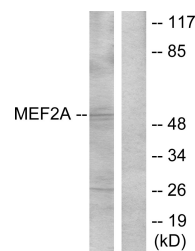
Clonality	Polyclonal
Clone ID	
Concentration	1 mg/mL
Conjugation	Unconjugated
Purification	The antibody was affinity-purified from rabbit anti-serum by affinity-chromatography.
Dilution Range	WB 1:500-1:2000 IHC 1:100-1:300 ELISA 1:20000
Formulation	PBS, 50% Glycerol, 0.5% BSA and 0.02% Sodium Azide.
Isotype	IgG
Storage Instruction	Store at -20°C for up to 1 year from the date of receipt, and avoid repeat freeze-thaw cycles.

TARGET INFORMATION

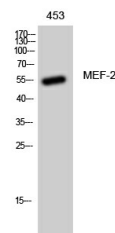
Gene ID	4205
Gene Symbol	MEF2A
Uniprot ID	MEF2A_HUMAN
Immunogen	The antiserum was produced against synthesized peptide derived from human MEF2A at amino acid range 279-328
Immunogen Region	250-330
Specificity	MEF2A polyclonal antibody (Myocyte-Specific Enhancer Factor 2a) binds to endogenous Myocyte-Specific Enhancer Factor 2a at the amino acid region 250-330.
Immunogen Sequence	



Immunohistochemistry analysis of paraffin-embedded human breast carcinoma tissue, using MEF2A Antibody. The picture on the right is blocked with the synthesized peptide.



Western blot analysis of lysates from NIH/3T3 cells, treated with PMA, using MEF2A Antibody. The lane on the right is blocked with the synthesized peptide.



Western blot analysis of 453 cells using MEF-2 Polyclonal Antibody diluted at 1: 1000 cells nucleus extracted by Minute TM Cytoplasmic and Nuclear Fractionation kit (SC-003, Inventibiotech, MN, USA).