

Anti-ME2 antibody (180-260 Internal) (STJ94059)

STJ94059

GENERAL INFORMATION

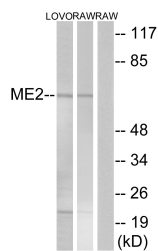
Product Type	Primary antibodies
Short Description	Rabbit polyclonal antibody anti-Nad-Dependent Malic Enzyme-Mitochondrial (180-260 Internal) is suitable for use in Western Blot, Immunohistochemistry, Immunofluorescence and ELISA research applications.
Applications	WB, IHC-P, IF-P, ELISA
Host/Source	Rabbit
Reactivity	Human, Rat, Mouse

PRODUCT PROPERTIES

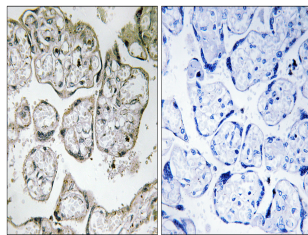
Clonality	Polyclonal
Clone ID	
Concentration	1 mg/mL
Conjugation	Unconjugated
Purification	The antibody was affinity-purified from rabbit anti-serum by affinity-chromatography.
Dilution Range	WB 1:500-1:2000 IHC 1:100-1:300 ELISA 1:40000
Formulation	PBS, 50% Glycerol, 0.5% BSA and 0.02% Sodium Azide.
Isotype	IgG
Storage Instruction	Store at -20°C for up to 1 year from the date of receipt, and avoid repeat freeze-thaw cycles.

TARGET INFORMATION

Gene ID	4200
Gene Symbol	ME2
Uniprot ID	MAOM_HUMAN
Immunogen	The antiserum was produced against synthesized peptide derived from human ME2 at amino acid range 201-250
Immunogen Region	180-260 Internal
Specificity	ME2 polyclonal antibody (Nad-Dependent Malic Enzyme-Mitochondrial) binds to endogenous Nad-Dependent Malic Enzyme-Mitochondrial at the amino acid region 180-260 Internal.
Immunogen Sequence	



Western blot analysis of lysates from RAW264.7 and LOVO cells, using ME2 Antibody. The lane on the right is blocked with the synthesized peptide.



Immunohistochemistry analysis of paraffin-embedded human placenta tissue, using ME2 Antibody. The picture on the right is blocked with the synthesized peptide.