

Anti-MDM1 antibody (640-720 C-Term) (STJ94054)

STJ94054

GENERAL INFORMATION

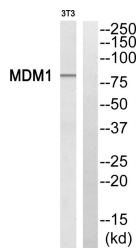
Product Type	Primary antibodies
Short Description	Rabbit polyclonal antibody anti-Nuclear Protein Mdm1 (640-720 C-Term) is suitable for use in Western Blot and ELISA research applications.
Applications	WB, ELISA
Host/Source	Rabbit
Reactivity	Human, Mouse, Rat

PRODUCT PROPERTIES

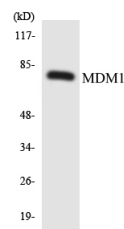
Clonality	Polyclonal
Clone ID	
Concentration	1 mg/mL
Conjugation	Unconjugated
Purification	The antibody was affinity-purified from rabbit anti-serum by affinity-chromatography.
Dilution Range	WB 1:500-1:2000 ELISA 1:5000
Formulation	PBS, 50% Glycerol, 0.5% BSA and 0.02% Sodium Azide.
Isotype	IgG
Storage Instruction	Store at -20°C for up to 1 year from the date of receipt, and avoid repeat freeze-thaw cycles.

TARGET INFORMATION

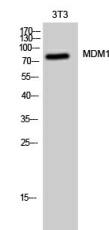
Gene ID	56890
Gene Symbol	MDM1
Uniprot ID	MDM1_HUMAN
Immunogen	The antiserum was produced against synthesized peptide derived from human MDM1 at amino acid range 665-714
Immunogen Region	640-720 C-Term
Specificity	MDM1 polyclonal antibody (Nuclear Protein Mdm1) binds to endogenous Nuclear Protein Mdm1 at the amino acid region 640-720 C-Term.
Immunogen Sequence	



Western blot analysis of MDM1 Antibody. The lane on the right is blocked with the MDM1 peptide.



Western blot analysis of the lysates from HepG2 cells using MDM1 antibody.



Western blot analysis of 3T3 cells using MDM1 Polyclonal Antibody cells nucleus extracted by Minute TM Cytoplasmic and Nuclear Fractionation kit (SC-003, Inventibiotech, MN, USA).

This product is suitable for in-vitro studies under the RESEARCH USE ONLY [RUO] licence. This product must not be used as for diagnostic or other medical purposes.
St John's Laboratory Ltd, Knowledge Dock Business Centre, University Way, London, E16 2RD | Tel: 0208 223 3081