

## Anti-SLC16A3 antibody (210-290 Internal) (STJ94050)

STJ94050

### GENERAL INFORMATION

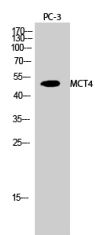
<b>Product Type</b>	Primary antibodies
<b>Short Description</b>	Rabbit polyclonal antibody anti-Monocarboxylate Transporter 4 (210-290 Internal) is suitable for use in Western Blot and ELISA research applications.
<b>Applications</b>	WB, ELISA
<b>Host/Source</b>	Rabbit
<b>Reactivity</b>	Human, Mouse, Rat

### PRODUCT PROPERTIES

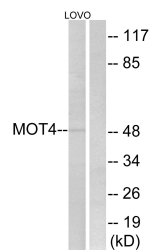
<b>Clonality</b>	Polyclonal
<b>Clone ID</b>	
<b>Concentration</b>	1 mg/mL
<b>Conjugation</b>	Unconjugated
<b>Purification</b>	The antibody was affinity-purified from rabbit anti-serum by affinity-chromatography.
<b>Dilution Range</b>	WB 1:500-1:2000 ELISA 1:40000
<b>Formulation</b>	PBS, 50% Glycerol, 0.5% BSA and 0.02% Sodium Azide.
<b>Isotype</b>	IgG
<b>Storage</b>	Store at -20°C for up to 1 year from the date of receipt, and avoid repeat freeze-thaw cycles.
<b>Instruction</b>	

### TARGET INFORMATION

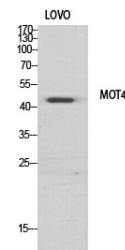
<b>Gene ID</b>	9123
<b>Gene Symbol</b>	SLC16A3
<b>Uniprot ID</b>	MOT4_HUMAN
<b>Immunogen</b>	The antiserum was produced against synthesized peptide derived from human MOT4 at amino acid range 233-282
<b>Immunogen Region</b>	210-290 Internal
<b>Specificity</b>	SLC16A3 polyclonal antibody (Monocarboxylate Transporter 4) binds to endogenous Monocarboxylate Transporter 4 at the amino acid region 210-290 Internal.
<b>Immunogen Sequence</b>	



Western blot analysis of PC-3 cells using MCT4 Polyclonal Antibody diluted at 1: 500



Western blot analysis of lysates from LOVO cells, using MCT4 Antibody. The lane on the right is blocked with the synthesized peptide.



Western blot analysis of various cells using MCT4 Polyclonal Antibody diluted at 1: 500

This product is suitable for in-vitro studies under the RESEARCH USE ONLY [RUO] licence. This product must not be used as for diagnostic or other medical purposes.  
St John's Laboratory Ltd, Knowledge Dock Business Centre, University Way, London, E16 2RD | Tel: 0208 223 3081